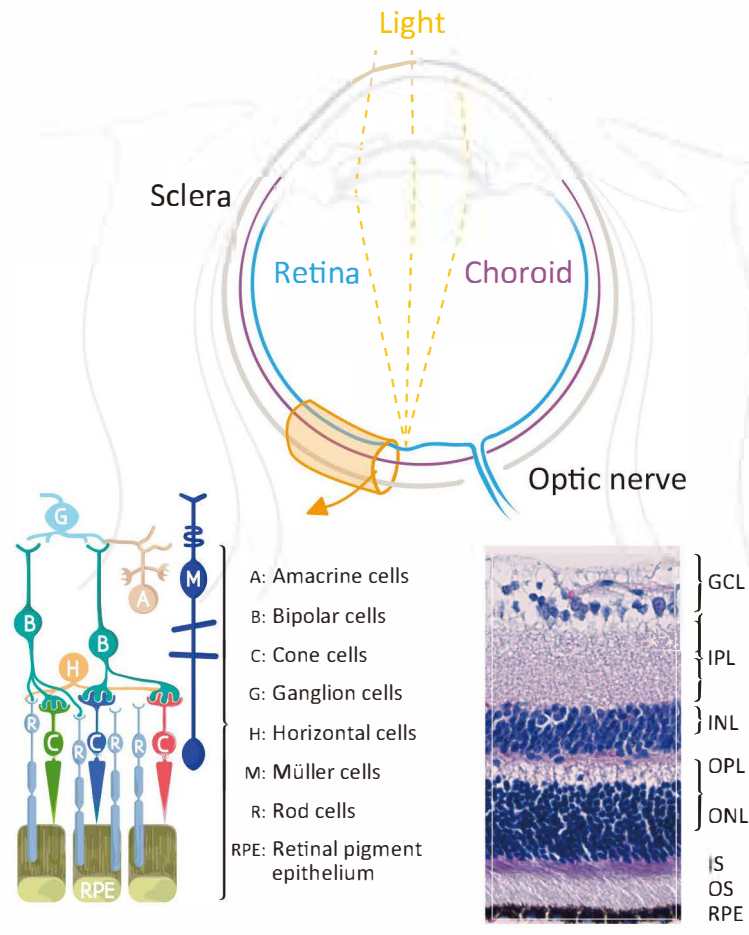


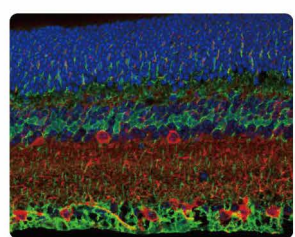
Vision and Retina





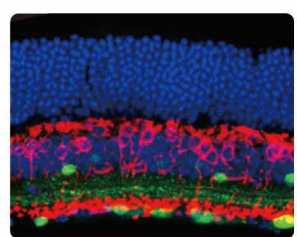
The retina is a light-sensitive layer of tissue on the back of the eye situated around the optic nerve. Light focused by the lens onto the retina initiates a cascade of signals that are relayed to the brain via the optic nerve to allow visual perception. Structurally, the retina consists of three layers of nerve cell bodies (including photoreceptor cells, bipolar cells, amacrine cells, horizontal cells, and ganglion cells), two layers of synapses, and the layer of pigmented epithelial cells.

GeneTex is proud to offer an outstanding selection of antibodies for vision and retina research. We offer reliable IHC-validated and/or ICC/IF-validated antibodies to facilitate your research efforts in this exciting field. Please see the highlighted antibodies below.

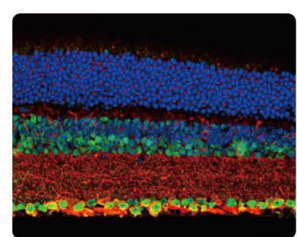
 KO/KD Validated  Citation Support




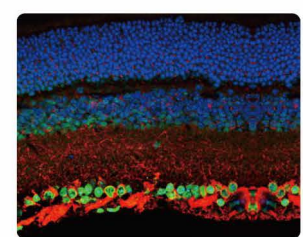
Glutamine synthetase antibody (GTX109121)  



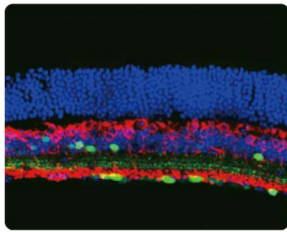
Calretinin antibody (GTX103261)



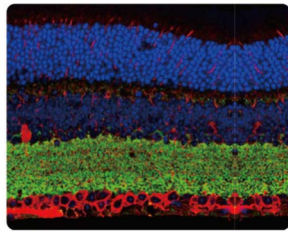
NeuN antibody (GTX133127) 



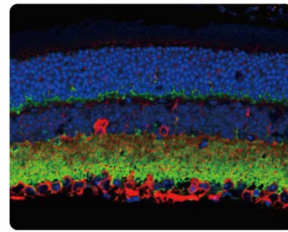
OTX2 antibody (GTX133210)



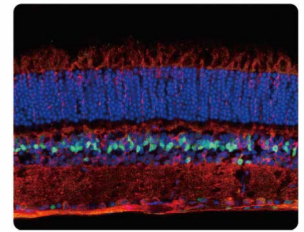
Choline Acetyltransferase antibody [N1N3] (GTX113164)



VGAT antibody [N1N2], N-term (GTX101908)



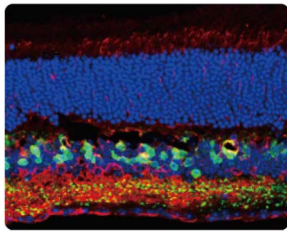
VAMP2 antibody (GTX133241)



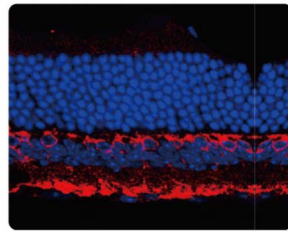
LHX2 antibody (GTX129241)

KO/KD Validated Citation Support

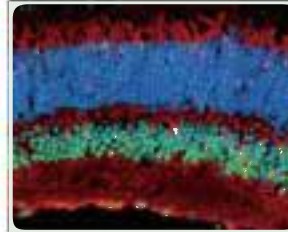
Cat. No.	Product Name	Host & Clonality	Application	Reactivity
GTX100479	ABAT antibody	Rb pAb	ICC/IF, IHC-Fr, IHC-P, WB	Hu, Ms, Rat
GTX82741	ABCA4 (Rim Protein) antibody [3F4]	Ms mAb	IHC, WB	Hu, Ms, XI, Bov
GTX107815	Activin A Receptor type I antibody	Rb pAb	IHC-Fr, WB	Ms, Rat
GTX112391	ALDH3A1 antibody [N1C2]	Rb pAb	IHC-Fr	Bov
GTX88085	ALDH3A1 antibody, C-term	Gt pAb	IHC, WB	Hu, Ms
GTX50077	alpha A Crystallin antibody [c9F2]	Ms mAb	ELISA, WB	Hu, Ms, Rat
GTX32168	alpha B Crystallin (phospho Ser19) antibody	Rb pAb	WB	Hu, Ms, Rat
GTX88907	alpha B Crystallin antibody, Internal	Gt pAb	WB	Ms, Rat
GTX628802	alpha Tubulin antibody [GT114]	Ms mAb	ICC/IF, IHC-Fr, IHC-P, WB	Hu, Ms, Dm, Rat, Zfish
GTX113564	AP2 alpha antibody	Rb pAb	IP, WB	Hu, Ms, Rat
GTX54297	Aquaporin 0 antibody	Rb pAb	WB	Hu, Ms, Rat
GTX129391	ATOH7 antibody	Rb pAb	IHC-P, WB	Hu, Ms
GTX101741	ATP5A1 antibody [C2C3], C-term	Rb pAb	ICC/IF, IHC-Fr, IHC-P, WB	Hu, Ms, Rat
GTX30087	BCL2L2 antibody	Rb pAb	IHC-P, WB	Hu, Ms, Rat
GTX132621	BDNF antibody	Rb pAb	IHC-P, WB	Ms
GTX109207	beta A3 Crystallin antibody [N1C3]	Rb pAb	WB	Ms
GTX53961	beta Crystallin antibody	Ms mAb	IHC-P, WB	Hu, Ms, Rb
GTX32540	Beta crystallin S antibody	Rb pAb	IHC-P, WB	Hu
GTX631836	beta Tubulin 3/ Tuj1 antibody [GT11710]	Ms mAb	ICC/IF, IHC-Fr, IHC-P, IP, WB	Hu, Ms, Rat
GTX102453	BMPR1B antibody [N3C3]	Rb pAb	IHC-Fr, IHC-P, WB	Hu, Ms, Rat, Bov
GTX130856	Calbindin antibody	Rb pAb	IHC-Fr, IHC-P, WB	Ms, Rat
GTX103261	Calretinin antibody	Rb pAb	ICC/IF, IHC-Fr, IHC-P, WB	Hu, Ms, Rat
GTX130072	CD90 antibody	Rb pAb	IHC-Fr, WB	Hu, Ms
GTX113164	Choline Acetyltransferase antibody [N1N3]	Rb pAb	ICC/IF, IHC-Fr, IHC-P, WB	Hu, Ms, Rat
GTX16141	CHX10 antibody	Shp pAb	WB	Hu, Ms, Rat, Bov
GTX53531	CLCN4 antibody	Rb pAb	ICC/IF, IHC-P, WB	Hu
GTX53514	COL9A1 antibody	Rb pAb	IHC-P, WB	Hu
GTX101735	Contactin 1 antibody	Rb pAb	IHC-Fr	Ms
GTX133205	Contactin 1 antibody	Rb pAb	IHC-Fr, WB	Ms, Rat
GTX133206	Contactin 1 antibody	Rb pAb	IHC-Fr, WB	Ms, Rat
GTX124188	CORD2 antibody	Rb pAb	IHC-P, WB	Hu, Ms
GTX33111	CORD2 antibody	Rb pAb	IHC, IHC-P, IP, WB	Hu, Ms, Rat
GTX85889	CRABP1 antibody [AT1A1]	Ms mAb	ELISA, IHC-P, WB	Hu, Ms
GTX50013	CRABP1 antibody [AT1A1]	Ms mAb	ELISA, FACS, ICC/IF, WB	Hu, Ms
GTX101551	CRABP2 antibody [N1C3]	Rb pAb	ICC/IF, IHC-P, WB	Hu, Ms, Rat
GTX15051	CRALBP antibody [B2]	Ms mAb	ELISA, FACS, ICC/IF, IHC, IHC-Fr, IP, WB	Hu, Ms, Rat, NHuPrm, Bov
GTX113541	CRALBP antibody [N2C3]	Rb pAb	ICC/IF, WB	Hu, Ms
GTX112846	CREB antibody	Rb pAb	ICC/IF, IHC-Fr, IHC-P, WB	Hu, Ms, Rat
GTX118270	CRYZ antibody [N1C1]	Rb pAb	ICC/IF, IHC-P, WB	Hu, Ms
GTX108804	Dlx1 antibody [N1C3-2]	Rb pAb	WB	Hu, Ms, Rat
GTX100200	FOXL2 antibody [C3], C-term	Rb pAb	WB	Ms
GTX133095	GAD65 antibody	Rb pAb	IHC-Fr	Ms
GTX133156	GAD65 antibody	Rb pAb	IHC-P, WB	Hu, Ms, Rat
GTX100281	GAD65 antibody [C2C3], C-term	Rb pAb	ICC/IF, IHC-Fr, IHC-P, WB	Hu, Ms, Rat
GTX101881	GAD67 antibody	Rb pAb	ICC/IF, IHC-Fr, IHC-P, WB	Hu, Ms, Rat
GTX113190	GAD67 antibody	Rb pAb	ICC/IF, IHC-P, WB	Hu, Ms, Rat
GTX633816	GAD67 antibody [GT1982]	Ms mAb	WB	Ms



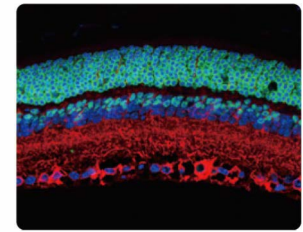
SCGN antibody [N2C3]
(GTX115443)



PKC alpha antibody
(GTX130453)



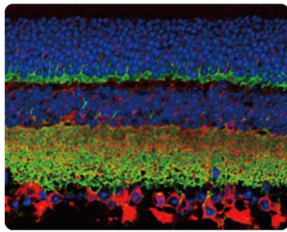
CREB antibody
(GTX112846) 



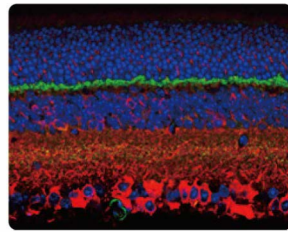
OTX3/CORD2 antibody
(GTX124188)

 KO/KD Validated  Citation Support

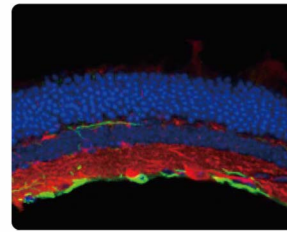
Cat. No.	Product Name	Host & Clonality	Application	Reactivity
 GTX100850	GFAP antibody	Rb pAb	IHC-Fr, ICC/IF, IHC-P, WB	Hu, Ms, Rat
 GTX108711	GFAP antibody	Rb pAb	IHC-Fr, ICC/IF, IHC-P, WB	Hu, Ms, Rat
  GTX109121	Glutamine synthetase antibody	Rb pAb	IP, IHC-Fr, ICC/IF, IHC-P, WB	Hu, Ms, Rat
 GTX630654	Glutamine synthetase antibody [GT1055]	Ms mAb	ICC/IF, IHC-Fr, IHC-P, WB	Hu, Ms, Rat
 GTX630657	Glutamine synthetase antibody [GT7711]	Ms mAb	ICC/IF, IHC-Fr, WB	Hu, Ms, Rat
GTX105960	GNAT1 antibody [N1C3]	Rb pAb	IHC-Fr, WB	Hu, Ms
GTX114440	GNAT2 antibody [N3C3]	Rb pAb	IHC-Fr	Ms
GTX23433	GNB1 antibody	Rb pAb	WB	Ms, Dm, Shp, Bov
 GTX114442	GNB1 antibody	Rb pAb	ICC/IF, IHC-P, IP, WB	Hu, Ms, Rat
GTX22776	GRK1 antibody [D11]	Ms mAb	ICC/IF, IHC, IHC-Fr, IP, WB	Hu, Ms, Bov
GTX22775	GRK1 antibody [G8]	Ms mAb	ICC/IF, IHC, IP, WB	Hu, Ms, Chk, Dog, Rat, Bov
GTX32674	IL17A antibody	Rb pAb	IHC-Fr, IHC-P, WB	Hu, Ms, Rat
GTX102807	Islet 1 antibody	Rb pAb	ICC/IF, IHC-Fr, IHC-P, WB	Hu, Ms, Rat
GTX133130	KCC2 antibody	Rb pAb	ICC/IF, IHC-P, WB	Hu, Ms, Rat
GTX129241	LHX2 antibody	Rb pAb	IHC-Fr, WB	Hu, Ms
GTX129215	LIM1 antibody	Rb pAb	IHC-Fr, IHC-P, WB	Ms, Rat
GTX120233	MEGF11 antibody	Rb pAb	WB	Ms
GTX19383	Melanopsin antibody	Rb pAb	ICC/IF, IHC, IHC-Fr, WB	Hu, Ms, Rat
 GTX101540	Musashi 1 antibody [N3C3]	Rb pAb	ICC/IF, IHC-Fr, IP, WB	Hu, Ms
  GTX117808	Musashi 2 antibody [N1C1]	Rb pAb	ICC/IF, IHC-Fr, IHC-P, IP, WB	Hu, Ms, Rat
 GTX121928	Nesprin 2 antibody [C3], C-term	Rb pAb	ICC/IF, IHC-Fr, IHC-P, WB	Hu, Ms
 GTX132974	NeuN antibody	Rb pAb	ICC/IF, IHC-Fr, WB	Ms, Rat
GTX133214	NeuroD1 antibody	Rb pAb	WB	Hu, Ms, Rat
GTX133207	NeuroD1 antibody	Rb pAb	WB	Hu
GTX110065	NF-H antibody	Rb pAb	ICC/IF, IHC-Fr, IHC-P, WB	Ms, Rat
GTX114580	NFIA antibody	Rb pAb	ICC/IF, IHC-Fr, IHC-P, WB	Hu, Ms, Rat
GTX41979	Nitrotyrosine antibody [39B6]	Ms mAb	ELISA, ICC/IF, IHC, IHC-P, IP, WB	Hu, Ms, Dog, Rat
 GTX30730	Nitrotyrosine antibody [39B6]	Ms mAb	IHC, IHC-P, IP, WB	Hu, Ms, Dog, Rat
GTX133097	NMDAR1 antibody	Rb pAb	ICC/IF, IHC-Fr, IHC-P, WB	Ms, Rat
GTX103558	NMDAR2A antibody	Rb pAb	IHC-P, WB	Hu, Ms, Rat
GTX82636	NMDAR2A antibody	Rb pAb	IHC, IP, WB	Hu, Ms, Rat
GTX105741	NPAS2 antibody [C1C3]	Rb pAb	ICC/IF, IHC-Fr, IHC-P, WB	Hu, Ms, Rat
GTX129917	OPA1 antibody	Rb pAb	WB	Hu
 GTX48589	OPA1 antibody	Rb pAb	IHC, WB	Hu, Ms, Chk, Rat
GTX32767	OPA3 antibody	Rb pAb	IHC-P, WB	Hu
GTX108155	Opsin 3 antibody [N1], N-term	Rb pAb	IHC-Fr, IHC-P, WB	Hu, Ms
GTX100173	Opsin 5 antibody [N2C1], Internal	Rb pAb	IHC-Fr, WB	Hu, Ms
GTX133210	OTX2 antibody	Rb pAb	IHC-P, WB	Hu, Ms
 GTX100446	p27 Kip1 antibody	Rb pAb	ICC/IF, IHC-Fr, IHC-P, IP, WB	Hu, Ms
GTX104288	P2X7 antibody	Rb pAb	IHC-Fr, IHC-P	Hu, Ms, Rat
GTX133116	PAX2 antibody	Rb pAb	WB	Hu
 GTX113241	PAX6 antibody	Rb pAb	ICC/IF, IHC-Fr, IP, WB	Hu, Ms, Rat
GTX89029	PAX6 antibody, Internal	Gt pAb	WB	Ms
GTX113242	PBX1 antibody	Rb pAb	IP, WB	Hu
GTX105260	PBX1 antibody [N2C3]	Rb pAb	ICC/IF	Hu
GTX88088	PBX1 antibody, Internal	Gt pAb	WB	Hu, Ms, Rat
GTX25659	PDE6A antibody	Rb pAb	ICC/IF, IHC, WB	Ms, Shp, Bov



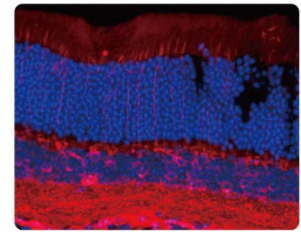
Synaptophysin antibody
(GTX100865)



PSD95 antibody
(GTX133091)



GFAP antibody
(GTX108711)



beta Tubulin 3/ TUJ1
antibody [GT11710]
(GTX631836)

KO/KD Validated Citation Support

Cat. No.	Product Name	Host & Clonality	Application	Reactivity
GTX25663	PDE6B antibody	Rb pAb	ICC/IF, IHC, IP, WB	Hu, Ms, Bov
GTX109240	PDE6D antibody [N1C3]	Rb pAb	ICC/IF, IHC-P, WB	Hu, Ms
GTX114097	PEDF antibody [N1C2]	Rb pAb	IHC-P, WB	Hu, Ms
GTX128974	PER1 antibody	Rb pAb	WB	Hu, Rat
GTX129688	PER2 antibody	Rb pAb	IHC-P, WB	Hu, Ms
GTX631397	PER2 antibody [GT5310]	Ms mAb	ICC/IF, WB	Hu
GTX131327	Phosducin / PDC antibody	Rb pAb	IHC-P, WB	Ms
GTX133936	PKC alpha (phospho Ser657) antibody	Rb pAb	WB	Hu
GTX130433	PKC alpha (phospho Thr497) antibody	Rb pAb	WB	Hu
GTX130453	PKC alpha antibody	Rb pAb	ICC/IF, IHC-Fr, WB	Hu, Ms, Rat
GTX11723	PKC alpha antibody [133]	Ms mAb	IHC-Fr, WB	Ms, Mamm
GTX130858	PMCA1 antibody	Rb pAb	IHC-Fr, IHC-P, WB	Hu, Ms, Rat
GTX130748	POU4F3 antibody	Rb pAb	IHC-P, WB	Hu, Ms
GTX88096	POU6F2 antibody, N-term	Gt pAb	WB	Ms
GTX129143	PROX1 antibody	Rb pAb	ICC/IF, WB	Hu, Ms, Rat
GTX133091	PSD95 antibody	Rb pAb	ICC/IF, IHC-Fr, IHC-P, WB	Hu, Ms, Rat
GTX116704	PTBP2 antibody	Rb pAb	ICC/IF, IHC-P, WB	Hu, Ms, Rat
GTX88658	RAB23 antibody, C-term	Gt pAb	WB	Ms
GTX22938	RANBP2 antibody	Rb pAb	ICC/IF, IHC, WB	Hu, Bov
GTX114714	RBP3 antibody [C2C3], C-term	Rb pAb	ICC/IF, IHC-P	Hu, Ms
GTX118619	RBPM5 antibody	Rb pAb	ICC/IF, IHC, IHC-P, WB, IHC-Wm	Hu, Ms, Rat
GTX129910	Rhodopsin antibody	Rb pAb	IHC-Fr, WB	Hu, Ms
GTX71103	Rhodopsin antibody	Rb pAb	IHC-P	Hu
GTX13826	RPE65 antibody [401.8B11.3D9]	Ms mAb	FACS, ICC/IF, IHC-Fr, IHC-P, WB	Hu, Ms
GTX103472	RPE65 antibody [N1C3]	Rb pAb	WB	Ms
GTX129573	S100 beta antibody	Rb pAb	ICC/IF, IHC-Fr, IHC-P, WB	Hu, Ms, Rat
GTX15617	S-arrestin antibody [PDS1]	Ms mAb	ELISA, IHC, IHC-P, IP, WB	Hu, Pig, Rat, Goat, Shp, Bov
GTX115443	SCGN antibody [N2C3]	Rb pAb	ICC/IF, IHC-Fr, IHC-P, WB	Hu, Ms, Rat
GTX107701	SHANK1 antibody [C3], C-term	Rb pAb	IHC-Fr, ICC/IF, IHC-P, WB	Hu, Ms, Rat
GTX70380	SHANK1a antibody	Rb pAb	IHC, WB	Hu
GTX89312	SLC24A5 antibody, Internal	Gt pAb	WB	Ms, Rat
GTX627404	SOX2 antibody [GT1876]	Ms mAb	FACS, IHC-Fr, IP, WB	Hu, Ms, Rat, Zfsh
GTX101507	SOX2 antibody [N1C3]	Rb pAb	FACS, ICC/IF, IHC-Fr, IHC-P, IP, WB	Hu, Ms, Rat
GTX100865	Synaptophysin antibody	Rb pAb	ICC/IF, IHC-P, WB	Hu, Ms, Rat
GTX45560	SYT9 antibody, Internal	Rb pAb	IHC-P, WB	Hu, Ms
GTX113016	Tyrosine Hydroxylase antibody	Rb pAb	ICC/IF, IHC-Fr, IHC-P, WB	Hu, Ms, Rat, Vole
GTX82570	Tyrosine Hydroxylase antibody	Shp pAb	ICC/IF, IHC, WB	Rat, Mamm
GTX10372	Tyrosine Hydroxylase antibody [185]	Ms mAb	ICC/IF, IHC-Fr, IHC-P, WB	Hu, Ms, Rat
GTX102424	Tyrosine Hydroxylase antibody [N1C1]	Rb pAb	ICC/IF, IHC-Fr, IHC-P, WB, IHC-Wm	Hu, Ms, Rat
GTX16557	Tyrosine Hydroxylase (phospho Ser40) antibody	Rb pAb	ICC/IF, IHC, IHC-Fr, WB	Hu, Ms, Mk, Pig, Rat, Bird, Ql
GTX133241	VAMP2 antibody	Rb pAb	ICC/IF, IHC-Fr, IHC-P, WB	Ms, Rat
GTX133251	Vesicular Acetylcholine Transporter antibody	Rb pAb	WB	Ms
GTX116240	Vezatin antibody	Rb pAb	IHC-P, WB	Hu, Ms, Rat