

Five Pillars of Ab Validation

Your Expertise

Our Antibodies

Accelerated Discovery

www.genetex.com



At GeneTex, we understand that researchers need high-quality antibodies to achieve accurate and reproducible experimental results. We recognize the importance of stringent validation of our reagents through the use of various analytic strategies to confirm antibody specificity. Based on the guidelines described by the International Working Group on Antibody Validation (IWGAV), GeneTex has been employing multiple approaches to certify antibody performance in our quality assurance process:


 KO/KD Validation

Knockout/Knockdown

Complete or significant reduction of signal following genome editing or RNA interference of target protein.


 Comparative Abs

Comparative Antibodies

Correlation between two antibodies against the same target with different epitopes across several samples, preferentially with different expression levels of the target protein.


 IP-MS Analysis

IP-MS

Mass spectrometry analysis of target protein peptide sequences from samples immunoprecipitated by antibody from lysates.


 Orthogonal Validation

Biological and Orthogonal Characteristics

Change of antibody signal in accordance with defined biological characteristics of target protein following specific sample preparation parameters, including drug treatments, hypoxia conditions, or subcellular fractionation. Also, analysis of signals from various cell lines that either do or do not express the target in the context of protein or mRNA levels.


 Protein Overexpression

Protein Overexpression

To confirm the endogenous signals detected by the antibody are the target protein, transfected cells with cDNA encoding the target protein are used as a positive control and independently validated by western blot.

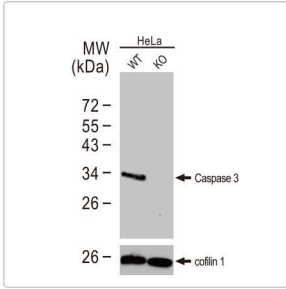
To facilitate your search, antibodies that satisfied at least one of these validation methods are identified by the certification icons.

Reference: *Nat Methods*. 2016 Oct;13(10):823-7.

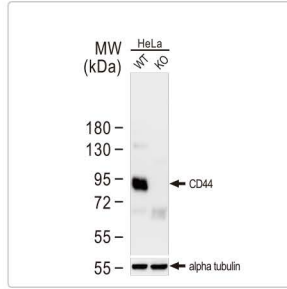


Representative Products

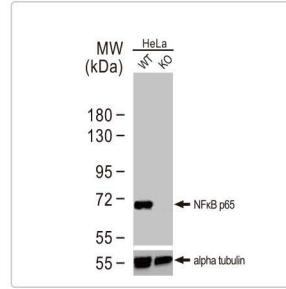
KO/KD Validation



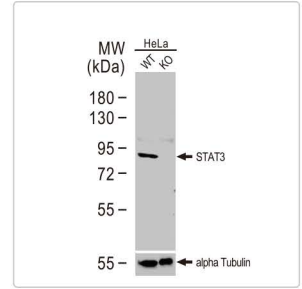
Caspase 3 antibody
(GTX110543)



CD44 antibody
(GTX102111)

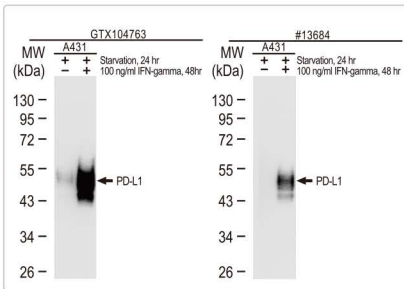


NFkB p65 antibody
(GTX102090)

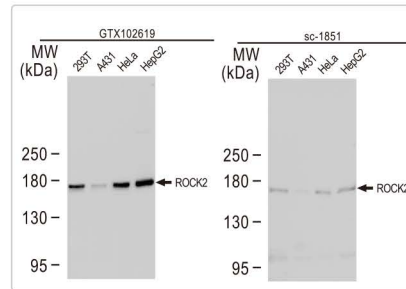


**STAT3 antibody [C3],
C-term (GTX104616)**

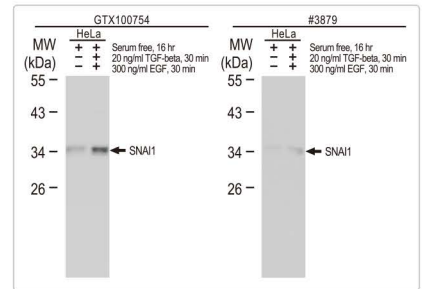
Comparative Abs



PD-L1 antibody
(GTX104763)

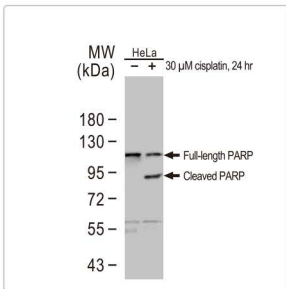


ROCK2 antibody
(GTX102619)

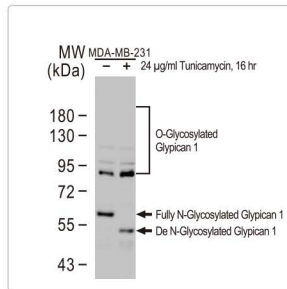


SNAI1 antibody
(GTX100754)

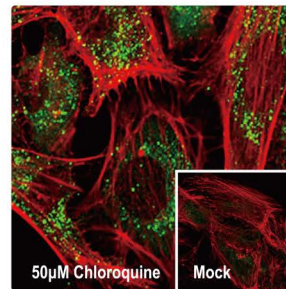
Orthogonal Validation



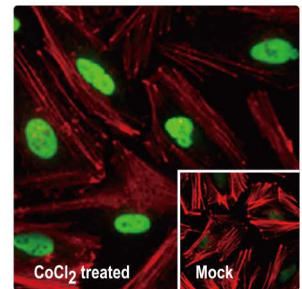
PARP antibody
(GTX100573)



Glypican 1 antibody
[N3C3] (GTX104557)

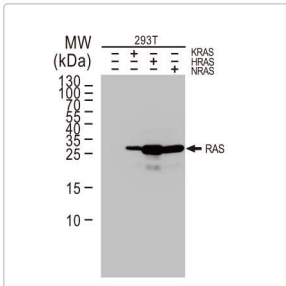


**SQSTM1 antibody [N3C1],
Internal (GTX100685)**

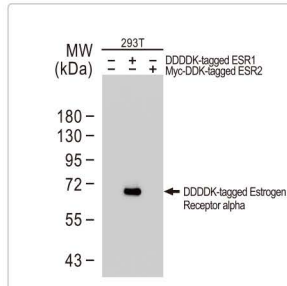


HIF1 alpha antibody
(GTX127309)

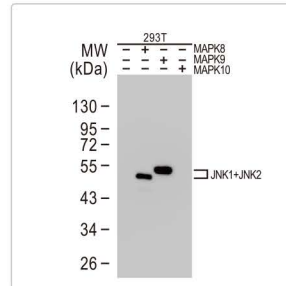
Protein Overexpression



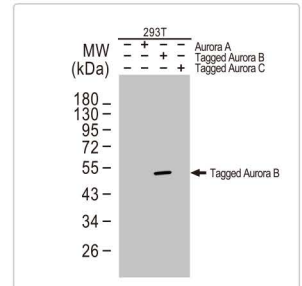
Ras antibody
(GTX132480)



Estrogen Receptor alpha
antibody [1F3] (GTX70171)



JNK1 + JNK2 antibody
(GTX133806)



Aurora B antibody
(GTX130211)



International

Tel 886.3.6208988
Fax 886.3.6208989
Address 6F-2, No.89, Dongmei Rd., Hsinchu 300, Taiwan (R.O.C.)
E-mail international@genetex.com

USA

Toll-free 1.877.GeneTex(1.877.436.3839)
Fax 1.949.309.2888
Address 2456 Alton Parkway, Irvine, CA 92606 USA
E-mail info@genetex.com

