

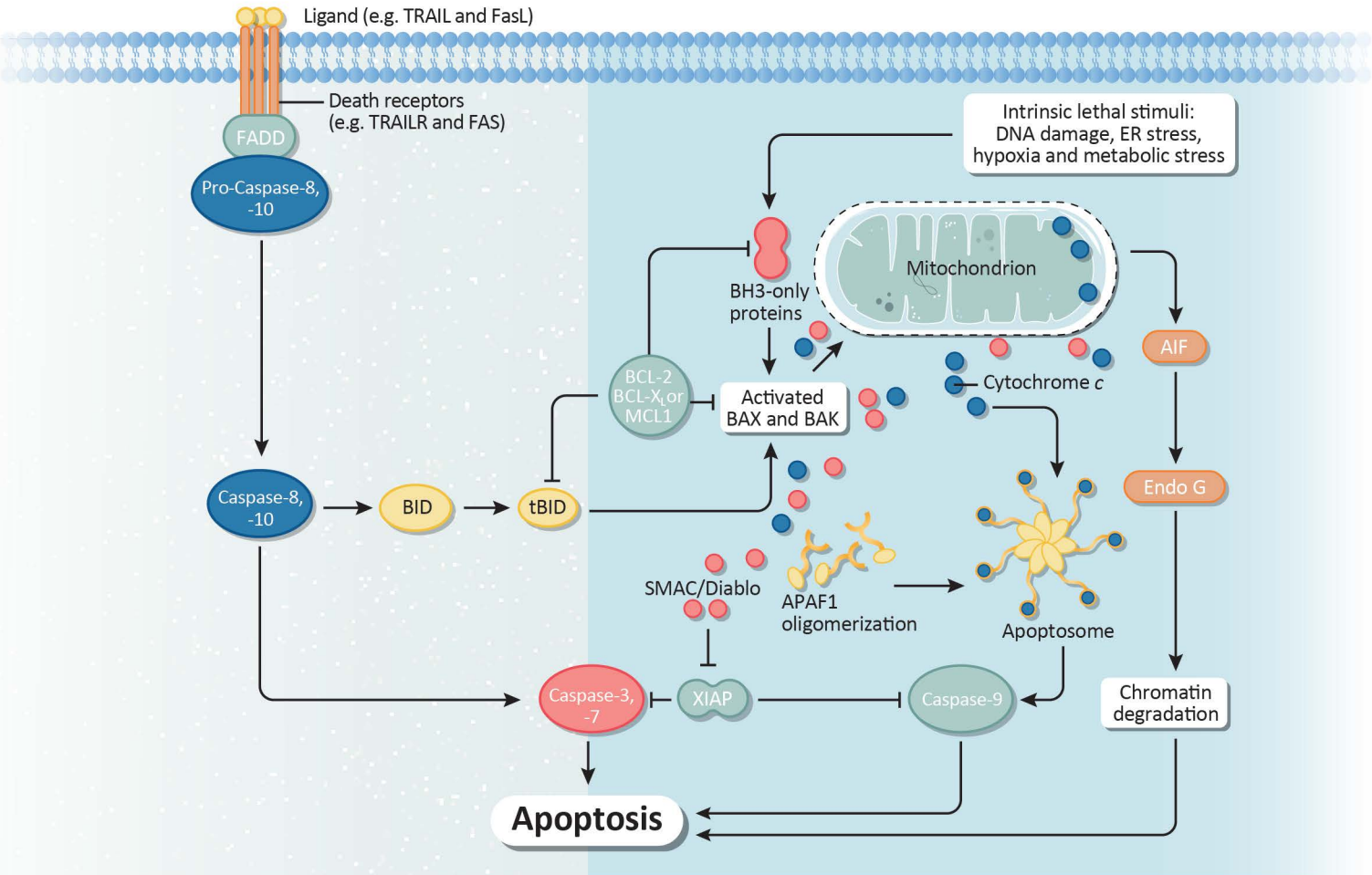
Apoptosis

www.genetex.com

- Your Expertise
- Our Antibodies
- Accelerated Discovery

Extrinsic pathway

Intrinsic pathway



Apoptosis is programmed cell death and is crucial for development and tissue homeostasis. It can be initiated by various stimuli and can progress through a receptor-mediated extrinsic pathway or an intrinsic pathway that starts with mitochondrial events. A spectrum of key players is involved, including transcription factors such as the tumor suppressor p53 and FOXO3a that drive expression of pro-apoptotic genes, effectors such as Caspase 3 and ROCK1, and factors like PARP and AIF that function in a caspase-independent pathway.

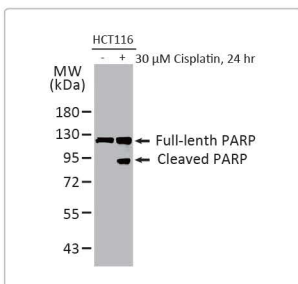
Highlighted Products

Recombinant Citation Support

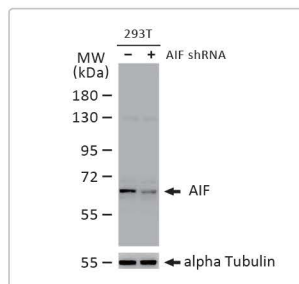
KO/KD Validation

Comparable Abs

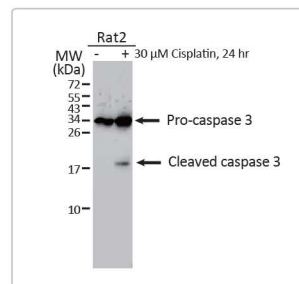
Orthogonal Validation



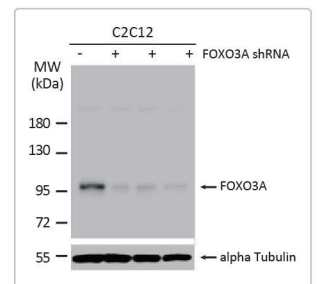
PARP antibody [HL1364]
(GTX636804)



AIF antibody [N1C1]
(GTX113306)

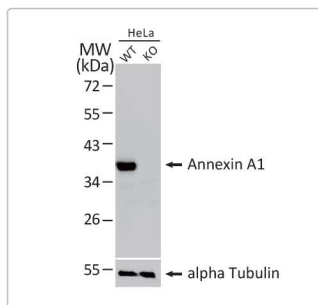


Caspase 3 antibody [HL1370]
(GTX636810)

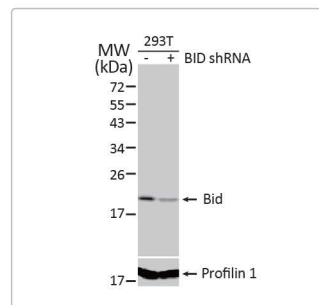


FOXO3A antibody [C3],
C-term(GTX100277)

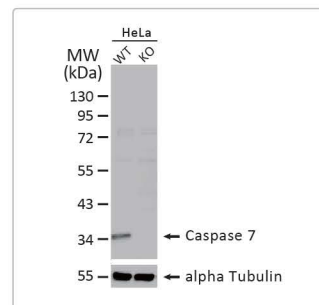
Cat. No.	Product Name	Clonality	Reactivity	Applications
	GTX113306 AIF antibody [N1C1]	Rb pAb	Hu,Ms,Rat	WB, ICC/IF, IHC-P
	GTX638119 Annexin A1 antibody [HL2141]	Rec Rb mAb	Hu,Ms,Rat	WB, IHC-P
	GTX638120 Annexin A1 antibody [HL2142]	Rec Rb mAb	Hu	WB
	GTX101070 Annexin A1 antibody	Rb pAb	Hu,Ms,Rat	WB, ICC/IF, IHC-P, IP
	GTX113329 Annexin A1 antibody	Rb pAb	Hu,Ms	WB, ICC/IF, IHC-P
	GTX103250 Annexin V antibody	Rb pAb	Hu,Ms,Rat	WB, FACS
	GTX101067 APAF1 antibody [C3], C-term	Rb pAb	Hu,Ms,Rat	IHC-P
	GTX637922 AXL antibody [HL2021]	Rec Rb mAb	Hu	WB, ELISA
	GTX635210 AXL antibody [GT1174]	Ms mAb	Hu,Ms	WB
	GTX108560 AXL antibody	Rb pAb	Hu	WB, IHC-P
	GTX129406 AXL antibody	Rb pAb	Hu,Rat	WB, IHC-P
	GTX129407 AXL antibody	Rb pAb	Hu	WB, IHC-P, ELISA
	GTX130108 Bad antibody	Rb pAb	Hu	WB, IHC-P
	GTX100063 BAK antibody [N1N2], N-term	Rb pAb	Hu	WB, IHC-P
	GTX635715 Bax antibody [HL236]	Rec Rb mAb	Hu,Ms,Rat	WB, IHC-P
	GTX109683 Bax antibody [N1N2], N-term	Rb pAb	Hu,Ms,Rat	WB, ICC/IF, IHC-P, IHC-Fr, IP
	GTX100440 Bcl-2 antibody	Rb pAb	Hu	WB
	GTX628905 Bcl-2 antibody [GT11210]	Ms mAb	Hu	WB, IHC-P
	GTX100064 Bcl-2 antibody [N1N2], N-term	Rb pAb	Hu,Ms,Rat,Zfsh,Cat,Dog	WB, ICC/IF, IHC-P
	GTX129653 Bcl-2 (phospho Ser70) antibody	Rb pAb	Hu	WB
	GTX129654 Bcl-2 (phospho Ser87) antibody	Rb pAb	Hu	WB
	GTX637939 Bcl-XL antibody [HL2038]	Rec Rb mAb	Hu,Ms,Rat	WB, IHC-P
	GTX637940 Bcl-XL antibody [HL2039]	Rec Rb mAb	Hu	WB, ICC/IF
	GTX101323 Bid antibody [N1C3]	Rb pAb	Hu	WB, IP
	GTX110568 Bid antibody [N1C3-2]	Rb pAb	Hu,Ms,Rat	WB, ICC/IF, IHC-P, IP
	GTX108852 BMF antibody [N1C3-2]	Rb pAb	Hu	WB
	GTX636515 BNIP3L antibody [HL1203]	Rec Rb mAb	Hu,Ms,Rat	WB, ICC/IF, IHC-P
	GTX111876 BNIP3L antibody	Rb pAb	Hu,Ms,Rat,Bov	WB, ICC/IF, IHC-P
	GTX637294 C1qA antibody [HL1695]	Rec Rb mAb	Hu,Ms,Rat	WB
	GTX134007 C1qA antibody	Rb pAb	Hu,Ms,Rat	WB, ICC/IF, IHC-P
	GTX101401 CAD antibody [C2C3], C-term	Rb pAb	Hu,Ms	WB, IHC-P
	GTX110542 Caspase 2 antibody	Rb pAb	Hu	WB
	GTX636810 Caspase 3 antibody [HL1370]	Rec Rb mAb	Hu,Rat	WB, IHC-P
	GTX110543 Caspase 3 antibody	Rb pAb	Hu,Ms,Rat	WB, ICC/IF, IHC-P, IHC-Fr, IP
	GTX123678 Caspase 3 antibody	Rb pAb	Hu,Ms,Rat,P. xylostella	WB, IHC-P
	GTX134362 Caspase 6 (cleaved Asp162) antibody	Rb pAb	Hu,Ms,Rat	WB, IHC-P
	GTX123679 Caspase 7 antibody	Rb pAb	Hu	WB, IHC-P, IP
	GTX110723 Caspase 8 antibody	Rb pAb	Hu,Ms,Rat,Cat,Dog	WB, ICC/IF, IHC-P
	GTX134589 Caspase 8 p10 antibody	Rb pAb	Hu	WB, IHC-P
	GTX112888 Caspase 9 antibody [N2C3]	Rb pAb	Hu,Ms,Rat,Dog	WB, IHC-P, IP
	GTX132331 Caspase 9 (cleaved Asp330) antibody	Rb pAb	Hu,Rat	WB
	GTX113148 Caspase 10 antibody	Rb pAb	Hu	WB, ICC/IF, IHC-P
	GTX635639 CDKN2A / p16INK4a antibody [GT888]	Ms mAb	Hu	WB, IHC-P



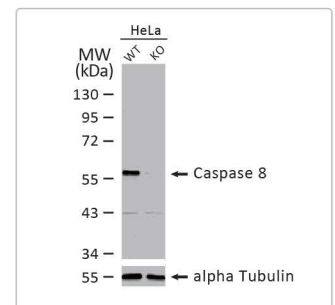
Annexin A1 antibody (GTX101070)



Bid antibody [N1C3-2] (GTX110568)

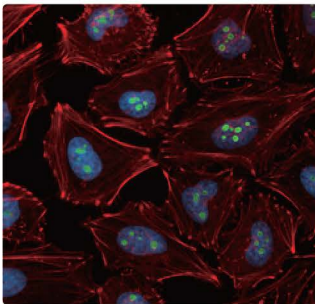


Caspase 7 antibody (GTX123679)

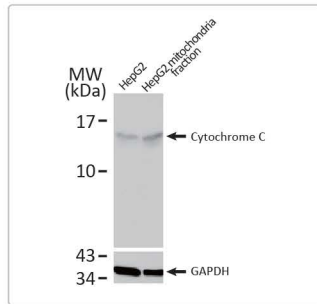


Caspase 8 antibody (GTX110723)

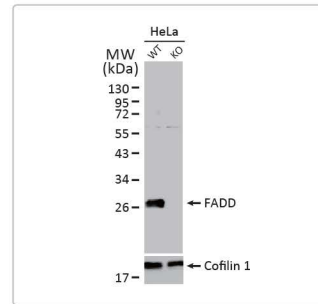
Cat. No.	Product Name	Clonality	Reactivity	Applications
GTX129902	CDKN2A / p14ARF antibody	Rb pAb	Hu	WB, IHC-P
GTX129903	CDKN2A / p14ARF antibody	Rb pAb	Hu	WB, IHC-P, IP
GTX135119	CDKN2A / p16INK4a antibody	Rb pAb	Hu	WB, ICC/IF, IP
GTX635979	cIAP1 antibody [HL1045]	Rec Rb mAb	Hu	WB, IHC-P
GTX629402	cIAP1 antibody [GT422]	Ms mAb	Hu,Ms,Rat,Cat,Dog	WB, IHC-P
GTX110087	cIAP1 antibody	Rb pAb	Hu	WB, ICC/IF
GTX628459	c-Myc antibody [GT168]	Ms mAb	Hu,Ms,Rat	WB, IHC-P
GTX103436	c-Myc antibody	Rb pAb	Hu	WB, IHC-P, FACS, IP
GTX109636	c-Myc antibody [N1], N-term	Rb pAb	Hu,Ms,X. laevis	WB, ICC/IF, IHC-P, IHC-Fr, IP, ChIP assay
GTX638209	Cytochrome C antibody [HL2205]	Rec Rb mAb	Hu	WB
GTX634187	Cytochrome C antibody [GT1711]	Ms mAb	Hu,Ms	WB, IHC-P
GTX633691	Cytochrome C antibody [GT577]	Ms mAb	Hu,Dm	WB, IHC-P
GTX108585	Cytochrome C antibody	Rb pAb	Hu,Ms,Rat	WB, IHC-P
GTX106746	Diablo antibody [N1C3]	Rb pAb	Hu,Ms,Rat,Dm,Dog	WB, ICC/IF, IHC-P, IHC-Fr
GTX114385	EndoG antibody [N1C3]	Rb pAb	Hu,Ms	WB, IHC-P
GTX100612	FADD antibody	Rb pAb	Hu,Ms	WB, ICC/IF
GTX116024	Fas antibody [N3C2], Internal	Rb pAb	Hu	WB, IHC-P
GTX100644	Fas Ligand antibody [N2C1], Internal	Rb pAb	Hu	WB
GTX113047	FLIP antibody [N1C1]	Rb pAb	Hu	WB
GTX100277	FOXO3A antibody [C3], C-term	Rb pAb	Hu	WB, IHC-P
GTX134747	GAS6 antibody	Rb pAb	Hu,Ms,Rat,Squirrel,Xenopus	WB, ICC/IF, IHC-P, IP
GTX135274	Granzyme B antibody	Rb pAb	Ms	WB
GTX112112	GRASP65 antibody [N1C1]	Rb pAb	Hu	WB
GTX110703	HTRA2 antibody	Rb pAb	Hu	WB
GTX132456	HTRA2 antibody	Rb pAb	Hu	WB, IHC-P
GTX103668	ICAD antibody [N1C3]	Rb pAb	Hu	WB
GTX113416	ICAD antibody [N2C3]	Rb pAb	Hu,Ms,Rat	WB
GTX132328	ICAD (cleaved Asp224) antibody	Rb pAb	Hu	WB
GTX629404	Lamin A + C antibody [GT9712]	Ms mAb	Hu	WB
GTX101127	Lamin A + C antibody	Rb pAb	Hu	WB, ICC/IF, IP
GTX111677	Lamin A + C antibody	Rb pAb	Hu,Ms,Rat	WB, ICC/IF, IHC-P, IP
GTX103292	Lamin B1 antibody	Rb pAb	Hu,Ms	WB, IHC-P
GTX628803	Lamin B2 antibody [GT144]	Ms mAb	Hu,Ms,Hm	WB, IHC-P, IP
GTX110309	Lamin B2 antibody	Rb pAb	Hu	WB, ICC/IF, IHC-P, IP
GTX109894	Lamin B2 antibody [N3C2], Internal	Rb pAb	Hu	WB, ICC/IF, IHC-P
GTX637019	MCL1 antibody [HL1544]	Rec Rb mAb	Hu,Ms	WB, IHC-P, IP
GTX102026	MCL1 antibody	Rb pAb	Hu,Ms,Rat,Cat,Dog	WB, IHC-P
GTX100531	MDM2 antibody	Rb pAb	Hu,Ms	WB, ICC/IF, IHC-P, IHC
GTX100654	MDM2 antibody	Rb pAb	Hu	WB, ICC/IF, IHC-P, IP, ChIP assay
GTX133996	MDM2 (phospho Ser166) antibody	Rb pAb	Hu	ICC/IF
GTX109294	MST1 antibody	Rb pAb	Hu	WB
GTX133948	MST1 (phospho Thr183) + MST2 (phospho Thr180) antibody	Rb pAb	Hu	WB, ICC/IF, IHC-P, IP
GTX100714	Myosin Light Chain 2 (MLC-2v) antibody	Rb pAb	Hu	WB



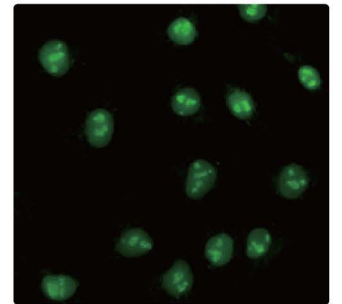
CDKN2A / p14ARF antibody (GTX129903)



Cytochrome C antibody (GTX108585)



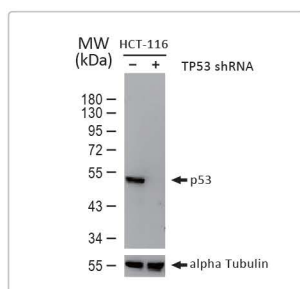
FADD antibody (GTX100612)



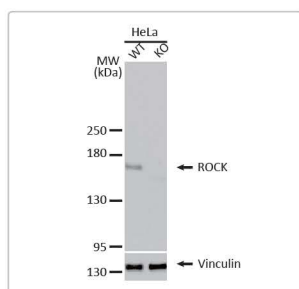
c-Myc antibody (GTX103436)

Hot Products

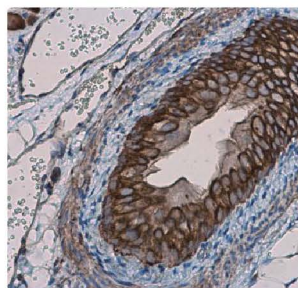
Cat. No.	Product Name	Clonality	Reactivity	Applications
GTX100888	Myosin Light Chain 2 (MLC-2v) antibody	Rb pAb	Hu,Ms,Rat	WB
GTX70214	p53 antibody [DO1]	Ms mAb	Hu,Ms	WB, ICC/IF, IHC-P, IHC-Fr, FACS, IP, ELISA
GTX102965	p53 antibody	Rb pAb	Hu,Ms,Zfsh	WB, ICC/IF, IHC-P, IP, ChIP assay
GTX118730	p53 antibody [C2C3], C-term	Rb pAb	Hu,Ms	WB, IHC-P, IP
GTX100629	p53 antibody [N1], N-term	Rb pAb	Hu,Ms	WB, ICC/IF, IHC-P, IP
GTX117515	p53 (mono-methyl Lys372) antibody	Rb pAb	Hu,Frg,Squirrel	WB, ICC/IF, IHC-P
GTX132995	p53 (phospho Ser15) antibody	Rb pAb	Hu	WB, ICC/IF
GTX133902	p53 (phospho Ser33) antibody	Rb pAb	Hu	WB
GTX133904	p53 (phospho ser392) antibody	Rb pAb	Hu	WB
GTX634168	p53 (phospho Ser46) antibody [GT1018]	Ms mAb	Hu	WB, ICC/IF, IHC-P
GTX132996	p53 (phospho Ser46) antibody	Rb pAb	Hu	WB, ICC/IF
GTX133905	p53 (phospho Ser6) antibody	Rb pAb	Hu	WB
GTX636395	p53 (R175H Mutant) antibody [HL1129]	Rec Rb mAb	Hu	WB, ICC/IF, IHC-P
GTX636804	PARP antibody [HL1364]	Rec Rb mAb	Hu,Ms	WB, ICC/IF, IHC-P
GTX628836	PARP antibody [GT6212]	Ms mAb	Hu,Ms,Rat	WB, IHC-P, IP
GTX632388	PARP antibody [GT982]	Ms mAb	Hu	WB, ICC/IF, IP
GTX100573	PARP antibody	Rb pAb	Hu,Ms,Rat	WB, ICC/IF, IHC-P, IP, ChIP assay
GTX112839	PARP antibody [N1N2], N-term	Rb pAb	Hu,Rat	WB, ICC/IF, IHC-P, IP, ChIP assay
GTX112864	PARP antibody [N2C1], Internal	Rb pAb	Hu,Ms,Rat	WB, ICC/IF, IHC-P, IP, ChIP assay
GTX132329	PARP (cleaved Asp214) antibody	Rb pAb	Hu	WB, ICC/IF
GTX102379	Perforin antibody [N1N3]	Rb pAb	Hu	WB
GTX110746	PSR antibody	Rb pAb	Hu,Ms	WB, IHC-P
GTX109675	PUMA antibody [C2C3], C-term	Rb pAb	Hu	WB, IHC-P, IP
GTX629972	ROCK1 antibody [GT464]	Ms mAb	Hu,Ms,Rat	WB
GTX113266	ROCK1 antibody [N1N2], N-term	Rb pAb	Hu,Ms,Rat	WB, ICC/IF, IHC-P, IP
GTX637058	TNF alpha antibody [HL1579]	Rec Rb mAb	Hu	WB
GTX110520	TNF alpha antibody	Rb pAb	Hu,Ms,Rat,Bov	WB, ICC/IF, IHC-P, IHC-Fr
GTX130100	TNF beta antibody	Rb pAb	Hu,Rat	WB
GTX102710	TNF Receptor I antibody	Rb pAb	Hu	WB
GTX132467	TRADD antibody	Rb pAb	Hu	WB
GTX113042	TRADD antibody [N2C3]	Rb pAb	Hu	WB, IHC-P
GTX111138	TRAF2 antibody	Rb pAb	Hu	WB, ICC/IF
GTX113043	TRAIL antibody	Rb pAb	Hu	WB
GTX111202	XIAP antibody	Rb pAb	Hu,Ms	WB, ICC/IF, IHC-P



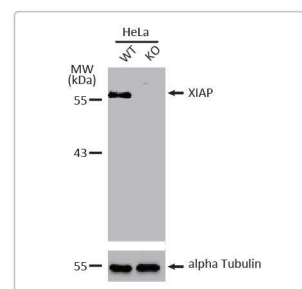
p53 antibody [DO1]
(GTX70214)



ROCK1 antibody [N1N2],
N-term (GTX113266)



TNF alpha antibody
(GTX110520)



XIAP antibody
(GTX111202)