

Your Expertise

Our Antibodies

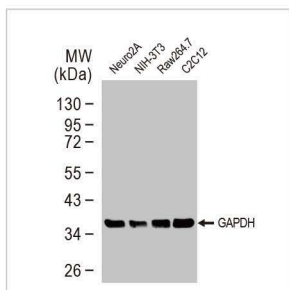
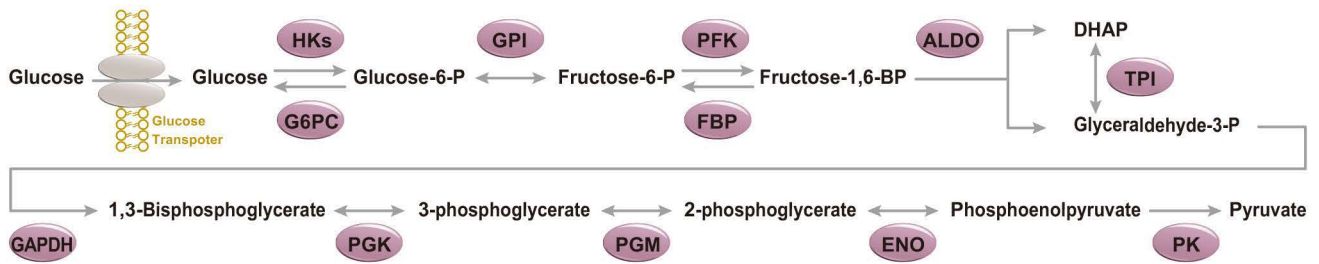
Accelerated Discovery

Metabolic Pathways

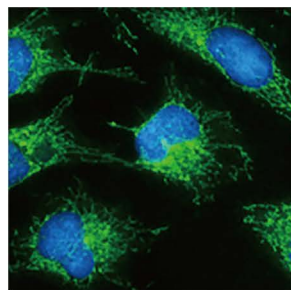
- Glycolysis
- TCA Cycle
- β -oxidation
- Lypolysis
- Ketogenesis
- Glycogenesis & Glycogenolysis
- Nitrogen Metabolism
- Lipid Biosynthesis
- Pentose Phosphate



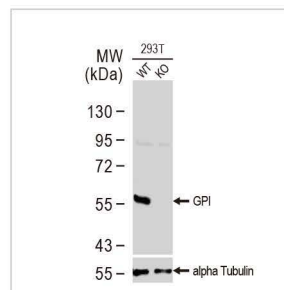
Glycolysis Pathway



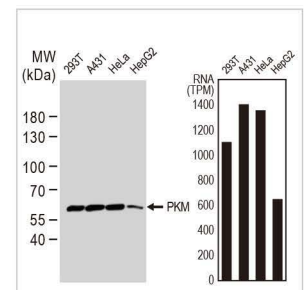
GAPDH antibody [GT239]
(GTX627408)



Hexokinase II antibody
(GTX111525)



GPI antibody
(GTX113203)



PKM antibody
(GTX107977)



Antibodies for Glycolysis Pathway

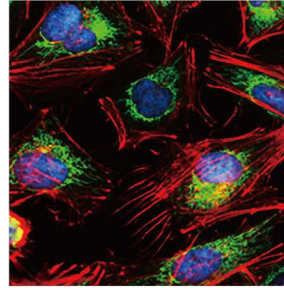
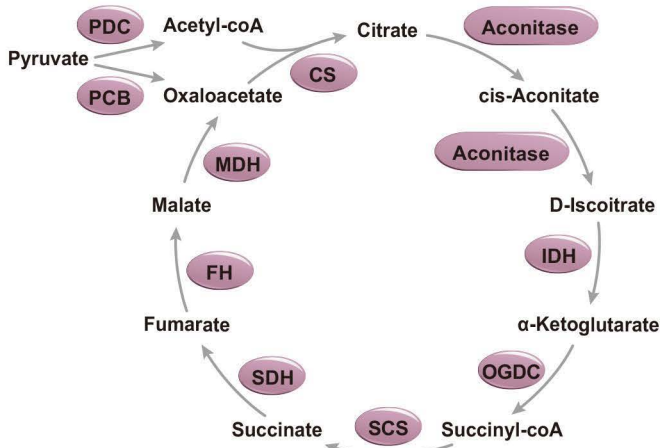
	Cat. No.	Product Name	Clonality	Reactivity	Applications
Glucose transporter	GTX02832	Glut1 antibody [GT1235]	Rb RecAb	Hu,Ms	WB
	GTX37419	GLUT12 antibody	Rb pAb	Hu,Rat	IHC-P
	GTX79317	GLUT4 antibody	Rb pAb	Hu,Ms,Rat	WB
	GTX31226	GLUT4 antibody [1F8]	Ms mAb	Hu,Ms,Rat,Rb,Pig,Mk	WB, ICC/IF, IHC-P, IHC-Fr, IP
	GTX12394	SLC2A8 antibody	Rb pAb	Hu,Ms,Rat,Pig	WB, IHC-P
HK	GTX84440	Glucokinase antibody [3E3]	Ms mAb	Hu	WB, ICC/IF, IHC-P
	GTX105248	Hexokinase 1 antibody	Rb pAb	Hu	WB, ICC/IF, IHC-P
	GTX111525	Hexokinase II antibody	Rb pAb	Hu,Ms,Rat	WB, ICC/IF, IHC-P
G6PC	GTX111409	Hexokinase III antibody [C1C3-2]	Rb pAb	Hu	WB, ICC/IF
	GTX46748	G6PC antibody, N-term	Rb pAb	Hu	WB, IHC-P
GPI	GTX113203	GPI antibody	Rb pAb	Hu	WB, ICC/IF, IHC-P
	GTX84416	GPI antibody [5A11]	Ms mAb	Hu,Dog,Mk	WB, ICC/IF, IHC-P, FACS
PFK	GTX111597	Fructose 6 Phosphate Kinase antibody [C1C3]	Rb pAb	Hu,Ms,Rat	WB, ICC/IF
	GTX111461	Fructose 6 Phosphate Kinase antibody [N1N2-2], N-term	Rb pAb	Hu,Ms,Rat	WB
	GTX105697	PFKL antibody [C1C3]	Rb pAb	Hu,Ms	WB, ICC/IF, IHC-P
	GTX107857	PFKP antibody [N3C3]	Rb pAb	Hu,Ms	WB

Antibodies for Glycolysis Pathway

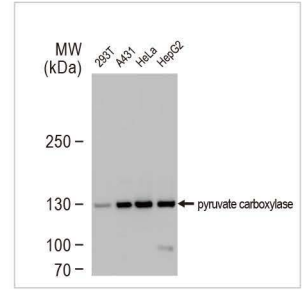
	Cat. No.	Product Name	Clonality	Reactivity	Applications
PFKFB	GTX111733	PFKFB1 antibody [N1N3]	Rb pAb	Hu	WB, ICC/IF, IHC-P
	GTX108335	PFKFB3 antibody [C3], C-term	Rb pAb	Hu	WB, IHC-P, IP
	GTX106237	PFKFB4 antibody [N3C3]	Rb pAb	Hu,Ms	WB, IHC-P
	GTX107755	PFKFB4 antibody	Rb pAb	Hu,Ms,Rat	WB, ICC/IF, IHC-P
FBP	GTX114401	FBP1 antibody	Rb pAb	Hu	WB
	GTX81482	FBP1 antibody, Internal	Rb pAb	Hu,Ms	WB, IHC-P
	GTX53713	FBP2 antibody [AT1E11]	Ms mAb	Hu,Ms	WB, ELISA
	GTX81753	FBP2 antibody, C-term	Rb pAb	Hu,Ms	WB
ALDO	GTX101408	Aldolase A antibody	Rb pAb	Hu,Ms,Rat	WB, IHC-P
	GTX26190	Aldolase A antibody	Goat pAb	Hu,Rb	WB, IP, ELISA
	GTX101363	Aldolase B antibody	Rb pAb	Hu,Ms,Rat,Turtle	WB, ICC/IF, IHC-P
	GTX114914	Aldolase B antibody	Rb pAb	Hu,Ms,Rat	WB, ICC/IF, IHC-P
TPI	GTX102284	Aldolase C antibody [N1C1]	Rb pAb	Hu,Ms,Rat	WB, IHC-Fr
	GTX104618	Triosephosphate isomerase antibody [C2C3], C-term	Rb pAb	Hu,Ms,Rat	WB, ICC/IF, IHC-P, ELISA
	GTX630779	Triosephosphate isomerase antibody [GT181]	Ms mAb	Hu,Ms,Rat	WB, ICC/IF, IHC-P
	GTX630778	Triosephosphate isomerase antibody [GT1111]	Ms mAb	Hu,Ms,Rat	WB, IHC-P
GAPDH	GTX100118	GAPDH antibody	Rb pAb	1	WB, ICC/IF, IHC-P, IP
	GTX627408	GAPDH antibody [GT239]	Ms mAb	2	WB, ICC/IF, IHC-P, EMSA
	GTX116000	GAPDHS antibody	Rb pAb	Hu,Ms	WB, ICC/IF, IHC-P
PGK	GTX107614	PGK1 antibody	Rb pAb	Hu,Ms,Rat,Yeast	WB, ICC/IF, IHC-P, IP, ELISA, PLA
	GTX101405	PGK1 antibody [N1C1]	Rb pAb	Hu,Ms,Rat	WB, IHC-P
	GTX107837	PGK2 antibody [N3C3]	Rb pAb	Hu	WB, IHC-P
PGM	GTX629745	PGAM1 antibody [GT256]	Ms mAb	Hu,Ms,Rat	WB, ICC/IF
	GTX114633	PGAM1 antibody [N1C3]	Rb pAb	Hu,Ms	WB
	GTX109582	PGAM2 antibody	Rb pAb	Hu,Rat	WB, ICC/IF
ENO	GTX101803	ENO1 antibody [N3C3]	Rb pAb	Hu,Ms,Rat	WB, ICC/IF, IHC-P, Dot
	GTX113179	ENO1 antibody	Rb pAb	Hu,Ms,Rat	WB, ICC/IF, IHC-P, IP
	GTX630507	ENO1 antibody [GT2217]	Ms mAb	Hu,Rat	WB
	GTX113429	ENO3 antibody	Rb pAb	Hu,Ms,Rat	WB, IHC-P
	GTX133249	NSE antibody	Rb pAb	Ms,Rat	WB, ICC/IF, IHC-P, IHC-Fr
Pyruvate kinase	GTX101553	NSE antibody [N1C1]	Rb pAb	Hu,Ms,Rat	WB, IHC-P, IHC-Fr
	GTX113428	NSE antibody [C1C3]	Rb pAb	Hu,Ms,Rat	WB, ICC/IF, IHC-Fr
	GTX111604	PKM antibody	Rb pAb	Hu,Ms,Rat	WB, ICC/IF, IHC-P
	GTX107977	PKM antibody	Rb pAb	Hu,Ms,Rat	WB, ICC/IF, IHC-P, IP
	GTX111536	Pyruvate Kinase (liver/RBC) antibody	Rb pAb	Hu,Rat	WB, ICC/IF, IHC-P
	GTX107546	Pyruvate Kinase (liver/RBC) antibody	Rb pAb	Hu,Ms,Rat	WB
	GTX111319	PKM antibody	Rb pAb	Hu,Ms,Rat	WB, IHC-P
	GTX107681	PKM antibody	Rb pAb	Hu,Ms,Rat	WB, ICC/IF, IHC-P

- 1** Hu,Ms,Rat,Zfish,Yeast,Rb,Dm,Bov,Dog,Hm,Chk,Pig,Mk,E. coli,Mosq,Nematode,Pika,Plant,Fish,Bacteria,milkfish
2 Hu,Ms,Rat,Zfish,Yeast,Dm,Pig,Mk,C. albicans,E. coli

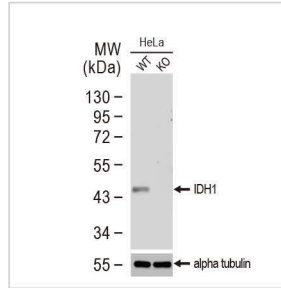
TCA Cycle



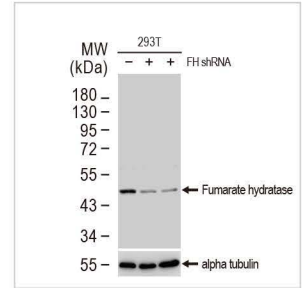
Citrate synthase antibody [GT1761] ([GTX628143](#))



Pyruvate Carboxylase antibody ([GTX132002](#))



IDH1 antibody [GT1521] ([GTX629818](#))



Fumarate hydratase antibody ([GTX110128](#))



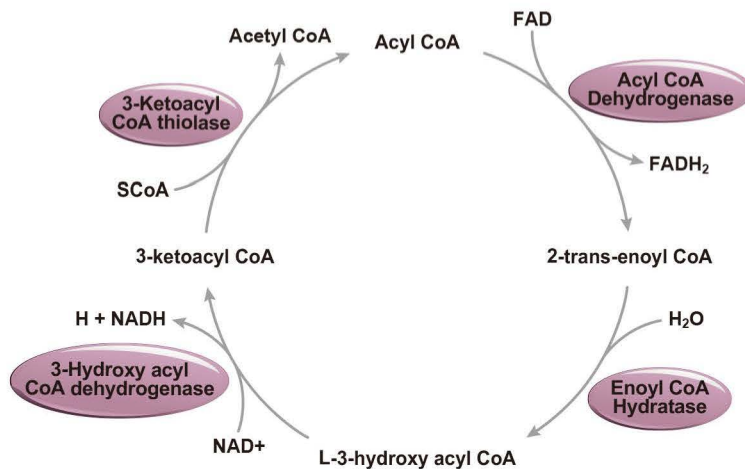
Antibodies for TCA Cycle

	Cat. No.	Product Name	Clonality	Reactivity	Applications
PCB	GTX132002	Pyruvate Carboxylase antibody	Rb pAb	Hu,Rat	WB, ICC/IF, IHC-P, IP
	GTX131987	Pyruvate Carboxylase antibody	Rb pAb	Hu,Ms	WB, ICC/IF, IHC-P
Aconitase	GTX102974	Aconitase 1 antibody [N1C1]	Rb pAb	Hu	WB, ICC/IF
	GTX128976	Aconitase 1 antibody	Rb pAb	Hu	WB, IHC-P
	GTX109736	Aconitase 2 antibody [C1C3]	Rb pAb	Hu,Ms,Rat	WB, ICC/IF, IHC-P, IP
	GTX114233	Aconitase 2 antibody [N1N3]	Rb pAb	Hu,Ms,Rat,Chk	WB, ICC/IF, IHC-P, IP
	GTX84966	Aconitase 2 antibody [7A11]	Ms mAb	Hu	WB, ICC/IF, FACS
IDH	GTX105179	IDH1 antibody	Rb pAb	Hu,Ms,Rat	WB, IHC-P, IP
	GTX133076	IDH1 antibody	Rb pAb	Hu	WB
	GTX629818	IDH1 antibody [GT1521]	Ms mAb	Hu,Ms,Rat	WB, ICC/IF, IP
	GTX628487	IDH2 antibody [GT673]	Ms mAb	Hu,Ms,Rat	WB, ICC/IF, IHC-P
	GTX104073	IDH3A antibody	Rb pAb	Hu,Ms,Rat	WB, ICC/IF, IHC-P
OGDC	GTX114486	IDH3A antibody	Rb pAb	Hu,Ms,Rat	WB, IHC-P
	GTX113467	IDH3G antibody	Rb pAb	Hu	IHC-P
	GTX112555	DLST antibody [N3C3]	Rb pAb	Hu,Rat	WB, ICC/IF, IHC-P
	GTX101245	DLD antibody	Rb pAb	Hu,Ms,Rat	WB, ICC/IF, IHC-P
	GTX101232	DLD antibody [N1N3]	Rb pAb	Hu,Rat	WB, IHC-P
SCS	GTX105124	OGDH antibody [C2C3], C-term	Rb pAb	Hu,Ms	WB, ICC/IF, IHC-P
	GTX109728	SUCLA2 antibody [N2C3]	Rb pAb	Hu,Ms	WB, ICC/IF, IHC-P
SDH	GTX107002	SUCLG2 antibody	Rb pAb	Hu,Ms	WB, ICC/IF, IHC-P
	GTX101689	SDHA antibody	Rb pAb	Hu,Ms,Rat	WB, ICC/IF, IHC-P
	GTX632636	SDHA antibody [GT20710]	Ms mAb	Hu,Ms,Rat	WB, ICC/IF, IHC-P
	GTX104628	SDHB antibody [C2C3], C-term	Rb pAb	Hu,Ms	WB, ICC/IF, IHC-P
	GTX113833	SDHB antibody	Rb pAb	Hu,Ms,Rat	WB, ICC/IF, IHC-P

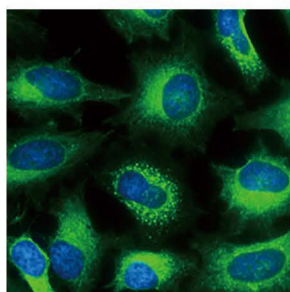
Antibodies for TCA Cycle

	Cat. No.	Product Name	Clonality	Reactivity	Applications
FH	GTX109877	Fumarate hydratase antibody	Rb pAb	Hu,Ms,Rat	WB, ICC/IF, IHC-P
	GTX110128	Fumarate hydratase antibody [N2C2], Internal	Rb pAb	Hu,Ms,Rat	WB, ICC/IF, IHC-P
	GTX630145	Fumarate hydratase antibody [GT548]	Ms mAb	Hu,Ms,Rat	WB
	GTX630146	Fumarate hydratase antibody [GT7612]	Ms mAb	Hu,Ms,Rat	WB, ICC/IF
MDH	GTX130900	MDH1 antibody	Rb pAb	Hu	WB
	GTX105870	MDH2 antibody	Rb pAb	Hu,Ms,Rat	WB, ICC/IF, IHC-P
CS	GTX110624	Citrate synthase antibody [N2C3]	Rb pAb	Hu,Ms,Rat,Chk,Mk,Frg	WB, ICC/IF, IHC-P, IP
	GTX628143	Citrate synthase antibody [GT1761]	Ms mAb	Hu,Ms,Rat,Zfsh	WB, ICC/IF, IHC-P
ATP citrate lyase	GTX112379	ATP citrate lyase antibody [C2C3], C-term	Rb pAb	Hu,Ms,Rat	WB, ICC/IF
	GTX112387	ATP citrate lyase antibody [N1N2], N-term	Rb pAb	Hu,Ms,Rat	WB, ICC/IF, IHC-P
PEPCK	GTX114919	PCK2 antibody	Rb pAb	Hu,Ms,Rat	WB, ICC/IF, IHC-P
PDC	GTX109766	DLAT antibody	Rb pAb	Hu	WB, ICC/IF, IHC-P
	GTX101232	DLD antibody [N1N3]	Rb pAb	Hu,Rat	WB, IHC-P
	GTX101245	DLD antibody	Rb pAb	Hu,Ms,Rat	WB, ICC/IF, IHC-P
	GTX106352	PDHX antibody [C3], C-term	Rb pAb	Hu	WB
	GTX104015	Pyruvate Dehydrogenase E1 alpha antibody	Rb pAb	Hu,Ms,Rat	WB, ICC/IF, IHC-P, IP
	GTX104040	Pyruvate Dehydrogenase E1 beta subunit antibody	Rb pAb	Hu,Ms,Rat	WB, ICC/IF, IHC-P
	GTX119625	Pyruvate Dehydrogenase E1 beta subunit antibody	Rb pAb	Hu,Ms	WB, ICC/IF, IHC-P
PDK	GTX105999	Pyruvate dehydrogenase kinase 1 / PDK1 antibody [N1C3]	Rb pAb	Hu	WB
	GTX60386	Pyruvate dehydrogenase kinase 1 / PDK1 antibody [4A11]	Ms mAb	Hu,Ms,Rat,Mk	WB, ICC/IF, IHC-P, FACS, ELISA
	GTX55290	PDK2 antibody	Rb pAb	Hu,Rat	WB, IHC-P
	GTX104286	PDK3 antibody [N1C2]	Rb pAb	Hu,Ms,Frg,Squirrel	WB, ICC/IF, IHC-P
	GTX81596	PDK4 antibody, Internal	Rb pAb	Hu	WB, ICC/IF, IHC-P
PDP	GTX109533	PDP1 antibody [N1N3]	Rb pAb	Ms	WB
Malic enzyme	GTX104122	ME1 antibody	Rb pAb	Hu,Ms,Rat	WB, ICC/IF, IHC-P, IP
	GTX632190	ME1 antibody [GT15611]	Ms mAb	Hu,Ms	WB, IHC-P, IHC-Fr
	GTX632189	ME1 antibody [GT979]	Ms mAb	Hu,Ms	WB, ICC/IF, IHC-P
	GTX130673	ME2 antibody	Rb pAb	Hu,Ms	WB, IHC-P, IP
	GTX130689	ME3 antibody	Rb pAb	Ms	WB

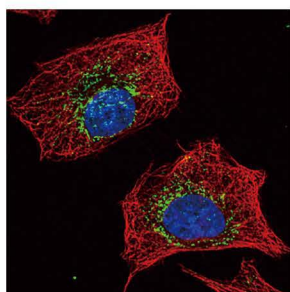
β-oxidation Pathway



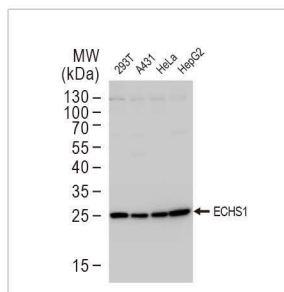
β -oxidation Pathway



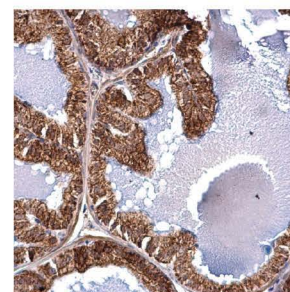
FACL4 antibody [C3], C-term ([GTX100260](#))



ACADM antibody ([GTX100488](#))



ECHS1 antibody [N1C2] ([GTX114376](#))



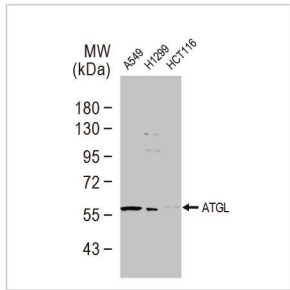
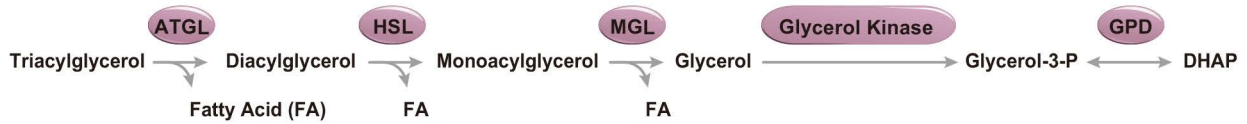
ACAA2 antibody ([GTX115417](#))



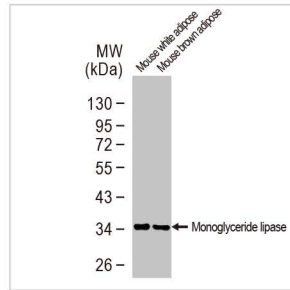
Antibodies for β -oxidation Pathway

	Cat. No.	Product Name	Clonality	Reactivity	Applications
FACL	GTX100260	FACL4 antibody [C3], C-term	Rb pAb	Hu,Ms,Rat	WB, ICC/IF, IHC-P, IP
	GTX114399	FACL4 antibody [N1N3]	Rb pAb	Hu,Ms,Rat	WB, ICC/IF, IHC-P
	GTX633365	FACL4 antibody [GT186]	Ms mAb	Hu,Ms,Rat	WB, ICC/IF, IHC-P
	GTX632675	FACL4 antibody [GT566]	Ms mAb	Hu,Ms,Rat	WB, IHC-P
	GTX115693	ACSL6 antibody	Rb pAb	Hu,Ms,Rat	WB, IHC-P
	GTX112431	ACSL3 antibody	Rb pAb	Hu	WB, ICC/IF, IHC-P
ACAD	GTX112430	ACSL1 antibody	Rb pAb	Hu	WB, IHC-P
	GTX100488	ACADM antibody	Rb pAb	Hu,Ms,Rat	WB, ICC/IF, IHC-P
	GTX101393	ACADM antibody	Rb pAb	Hu,Ms	WB, ICC/IF, IHC-P
	GTX100487	ACADM antibody	Rb pAb	Hu,Ms	WB, ICC/IF, IHC-P
	GTX100032	ACADM antibody	Rb pAb	Hu	WB, ICC/IF, IHC-P
	GTX114231	ACADSB antibody	Rb pAb	Hu	WB, ICC/IF, IHC-P
	GTX100486	ACADL antibody [N1N2], N-term	Rb pAb	Hu	WB, IHC-P
	GTX100490	ACADS antibody	Rb pAb	Hu	WB, IHC-P
	GTX103305	ACAD8 antibody [N3C3]	Rb pAb	Hu	WB
	GTX114232	ACADVL antibody [N1C1]	Rb pAb	Hu,Ms,Rat	WB, ICC/IF, IHC-P
ECHS	GTX114376	ECHS1 antibody [N1C2]	Rb pAb	Hu,Ms	WB, ICC/IF, IHC-P, IP
	GTX114375	ECHS1 antibody	Rb pAb	Hu,Ms	WB, ICC/IF, IHC-P, IP
	GTX103552	ECH1 antibody [N1C3]	Rb pAb	Hu,Ms	WB, IHC-P
	GTX103864	HSD17B4 antibody	Rb pAb	Hu,Rat	WB, ICC/IF, IHC-P
	GTX114978	HSD17B4 antibody	Rb pAb	Hu,Ms	WB, ICC/IF, IHC-P
HADH	GTX100301	ERAB antibody	Rb pAb	Hu,Ms,Rat	WB, ICC/IF, IHC-P
	GTX113454	ERAB antibody [N1C3]	Rb pAb	Hu	WB, IHC-P
	GTX113455	ERAB antibody [N2C3]	Rb pAb	Hu	WB, IHC-P
	GTX105167	HADH antibody	Rb pAb	Hu,Ms,Rat	WB, ICC/IF, IHC-P, IP
	GTX118325	HADH antibody	Rb pAb	Hu,Ms,Rat	WB, ICC/IF, IHC-P
	GTX101177	HADHA antibody	Rb pAb	Hu,Ms,Rat	WB, ICC/IF, IHC-P
ACAA	GTX100302	HADHB antibody [N1], N-term	Rb pAb	Hu	WB
	GTX114229	ACAA1 antibody	Rb pAb	Hu,Ms	WB, ICC/IF, IHC-P
	GTX114230	ACAA1 antibody	Rb pAb	Hu,Ms	WB, ICC/IF, IHC-P
	GTX115416	ACAA2 antibody	Rb pAb	Hu	WB, ICC/IF
	GTX115417	ACAA2 antibody	Rb pAb	Hu,Ms	WB, ICC/IF, IHC-P

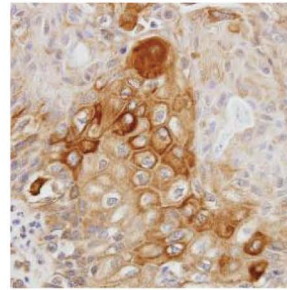
Lypolysis Pathway



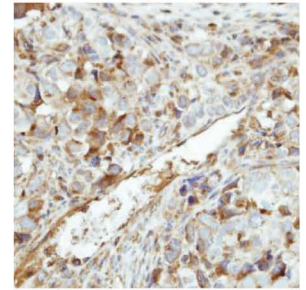
ATGL antibody [N1C1] (GTX109941)



Monoglyceride lipase antibody (GTX103517)



Glycerol kinase 2 antibody [N1C1] (GTX103519)

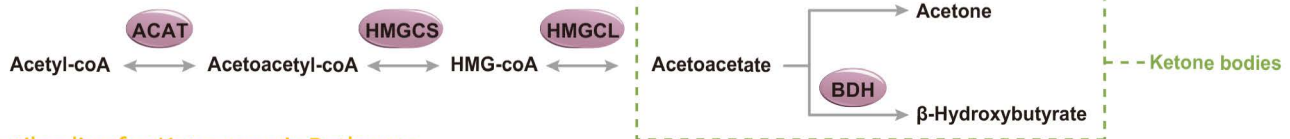


GK5 antibody (GTX107498)

Antibodies for Lypolysis Pathway

	Cat. No.	Product Name	Clonality	Reactivity	Applications
ATGL	GTX59676	ATGL antibody	Rb pAb	Hu,Ms,Rat	WB, IP, IHC
	GTX109941	ATGL antibody [N1C1]	Rb pAb	Hu,Ms	WB
HSL	GTX33957	HSL antibody	Rb pAb	Hu,Ms,Rat	WB, IHC-P
MGL	GTX103517	Monoglyceride lipase antibody	Rb pAb	Hu,Ms,Rat	WB, IHC-P
	GTX88653	Monoglyceride lipase antibody, Internal (near N-term)	Goat pAb	Hu,Ms	WB, IHC-P
Glycerol kinase	GTX102297	Glycerol kinase antibody [N3C2], Internal	Rb pAb	Hu	WB, ICC/IF
	GTX107474	Glycerol kinase antibody [N1N3-2]	Rb pAb	Hu	WB, ICC/IF
	GTX103519	Glycerol kinase 2 antibody [N1C1]	Rb pAb	Hu	WB, ICC/IF, IHC-P
	GTX107563	Glycerol kinase 2 antibody [N1C1-3]	Rb pAb	Hu	WB, IHC-P
	GTX107498	GK5 antibody	Rb pAb	Hu	WB, IHC-P
GPD	GTX117910	GPD1 antibody	Rb pAb	Hu,Rat	WB, ICC/IF, IHC-P
	GTX114447	GPD2 antibody [N1N3]	Rb pAb	Hu	WB

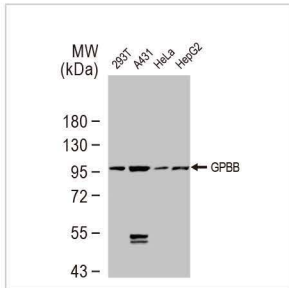
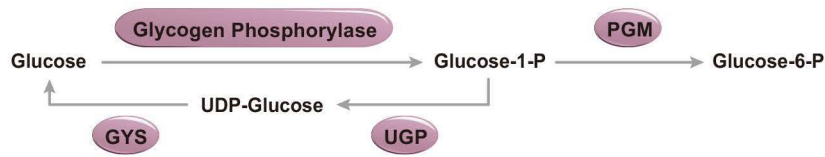
Ketogenesis Pathway



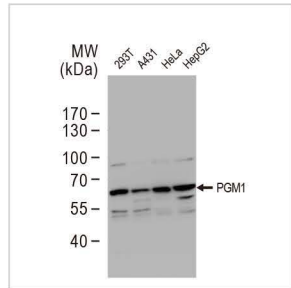
Antibodies for Ketogenesis Pathway

	Cat. No.	Product Name	Clonality	Reactivity	Applications
ACAT	GTX102637	ACAT1 antibody [N1N3]	Rb pAb	Hu,Ms	WB, ICC/IF, IHC-P
HMGCS	GTX112346	HMGCS1 antibody	Rb pAb	Hu,Ms	WB, ICC/IF, IHC-P
	GTX128013	HMGCS2 antibody	Rb pAb	Hu	WB, IHC-P
HMGCL	GTX114472	HMGCL antibody [N2C3]	Rb pAb	Hu	WB, IHC-P
BDH	GTX83270	BDH1 antibody [1A5]	Ms mAb	Hu,Ms	WB, IHC-P, ELISA

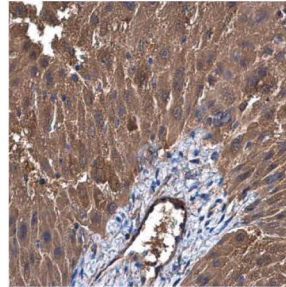
Glycogenesis & Glycogenolysis Pathway



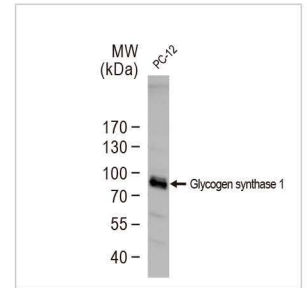
GPBB antibody
([GTX104291](#))



PGM1 antibody
([GTX110069](#))



UGP2 antibody [N3C3-2]
([GTX107967](#))

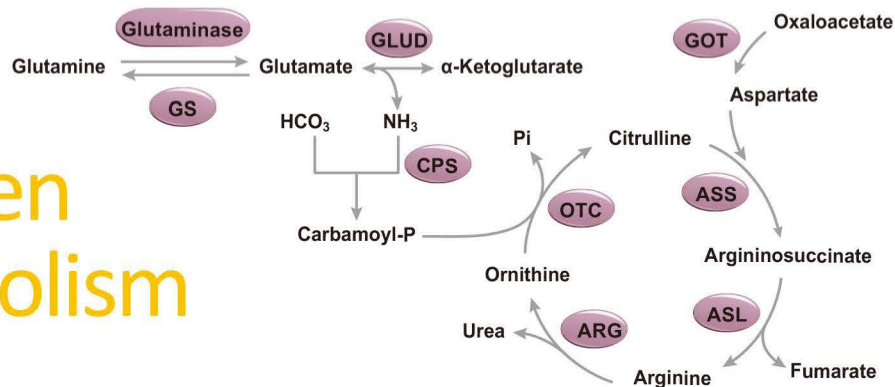


Glycogen synthase 1
antibody ([GTX113453](#))

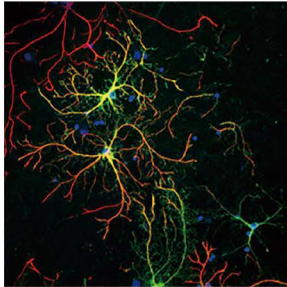
Antibodies for Glycogenesis & Glycogenolysis Pathway




	Cat. No.	Product Name	Clonality	Reactivity	Applications
Glycogen phosphorylase	GTX104291	GPBB antibody	Rb pAb	Hu, Ms	WB, IHC-P
	GTX114952	GPBB antibody [N1N2], N-term	Rb pAb	Hu, Ms	WB
	GTX33448	PYGL antibody	Rb pAb	Hu, Ms, Rat	WB, ICC/IF, IP
	GTX110411	PYGM antibody [C1C3]	Rb pAb	Hu, Ms	WB, IHC-P
PGM	GTX110069	PGM1 antibody	Rb pAb	Hu	WB, ICC/IF
	GTX119168	PGM2 antibody [N1C2]	Rb pAb	Hu	WB
	GTX119169	PGM2 antibody [C1C3]	Rb pAb	Hu	WB
	GTX114634	PGM3 antibody [N1C1]	Rb pAb	Hu, Ms	WB, ICC/IF
UGP	GTX107967	UGP2 antibody [N3C3-2]	Rb pAb	Hu, Ms	WB, ICC/IF, IHC-P
	GTX102684	UGP2 antibody [N1C1]	Rb pAb	Hu	WB, IHC-P
GYS	GTX113453	Glycogen synthase 1 antibody	Rb pAb	Hu, Rat	WB, IHC-P
	GTX22479	Glycogen synthase 1 (phospho Ser641) antibody	Rb pAb	Hu, Ms	WB, IHC-P, ELISA

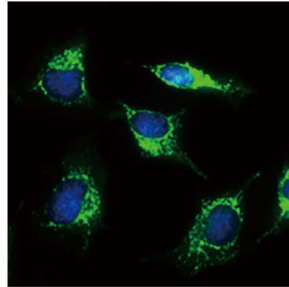
Nitrogen Metabolism Pathway



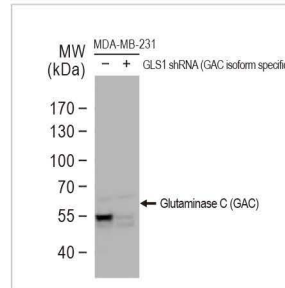
Nitrogen Metabolism Pathway



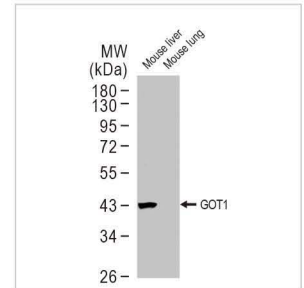
Glutamine synthetase antibody [GT1055] (GTX630654)   




GLUD antibody (GTX112361)




Glutaminase C (GAC) antibody (GTX131263)  

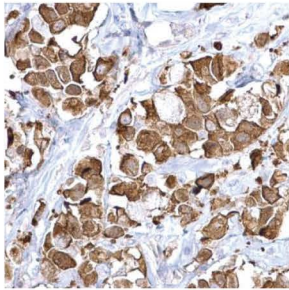


GOT1 antibody [GT638] (GTX632031) 

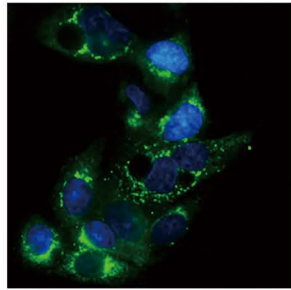
Antibodies for Nitrogen Metabolism Pathway

	Cat. No.	Product Name	Clonality	Reactivity	Applications
GLUD	  GTX105765	Glutamate Dehydrogenase antibody	Rb pAb	Hu,Ms,Rat	WB, ICC/IF, IHC-P, ELISA
	 GTX88164	Glutamate Dehydrogenase antibody, Internal	Goat pAb	Hu,Ms,Rat	WB, ICC/IF, IHC-P
	 GTX112361	GLUD1+2 antibody	Rb pAb	Hu,Ms,Rat	WB, ICC/IF, IHC-P
GOT	 GTX632031	GOT1 antibody [GT638]	Ms mAb	Hu,Ms	WB
	 GTX632032	GOT1 antibody [GT1342]	Ms mAb	Hu,Ms	WB, ICC/IF
	 GTX632033	GOT1 antibody [GT1255]	Ms mAb	Hu,Ms	WB, ICC/IF
GOT2	  GTX101929	GOT2 antibody	Rb pAb	Hu,Ms,Rat	WB, ICC/IF, IHC-P
	  GTX101930	GOT2 antibody	Rb pAb	Hu,Ms,Rat	WB, ICC/IF, IHC-P
	 GTX101559	GPT antibody [N1N3]	Rb pAb	Hu,Ms	WB
GPT	GTX112952	GPT antibody [N2C2], Internal	Rb pAb	Hu	WB, IHC-P
CPS	GTX101401	CAD antibody [C2C3], C-term	Rb pAb	Hu,Ms	WB, IHC-P
OTC	 GTX105140	OTC antibody	Rb pAb	Hu,Ms	WB, IHC-P, IHC-Fr
ASS	GTX101344	ASS1 antibody	Rb pAb	Hu	WB, IHC-P
ASL	  GTX109750	ASL antibody	Rb pAb	Hu	WB, ICC/IF, IHC-P
	  GTX113629	ASL antibody	Rb pAb	Hu,Ms	WB, ICC/IF, IHC-P
Arginase	   GTX109242	Arginase 1 antibody	Rb pAb	Hu,Ms,Rat	WB, ICC/IF, IHC-P, IHC-Fr, FACS, IP, ELISA, Sandwich ELISA
	 GTX113131	Arginase 1 antibody	Rb pAb	Hu,Ms,Rat	WB, ICC/IF, IHC-P, ELISA, IHC, Sandwich ELISA
	  GTX104036	ARG2 antibody	Rb pAb	Hu,Ms,Rat	WB, IHC-P, IHC-Fr
GS	   GTX109121	Glutamine synthetase antibody	Rb pAb	Hu,Ms,Rat	WB, ICC/IF, IHC-P, IHC-Fr, IP, IHC
	   GTX630654	Glutamine synthetase antibody [GT1055]	Ms mAb	Hu,Ms,Rat	WB, ICC/IF, IHC-P, IHC-Fr
	  GTX630657	Glutamine synthetase antibody [GT7711]	Ms mAb	Hu,Ms,Rat	WB, ICC/IF, IHC-Fr
Glutaminase	  GTX131263	Glutaminase C (GAC) antibody	Rb pAb	Hu,Ms	WB, ICC/IF, IHC-P, IP
	  GTX132402	Glutaminase C (GAC) antibody	Rb pAb	Hu	WB, ICC/IF, IHC-P, IP
	 GTX632317	Glutaminase C (GAC) antibody [GT3211]	Ms mAb	Hu,Ms	WB, ICC/IF, IHC-P
Asparagine synthetase	 GTX103569	Asparagine synthetase antibody [N3C3]	Rb pAb	Hu	WB
	 GTX114269	Asparagine synthetase antibody	Rb pAb	Hu	WB, IHC-P
NOS	  GTX129058	eNOS (phospho Ser1177) antibody	Rb pAb	Hu,Ms,Rat	WB, IHC-P
	  GTX129843	eNOS antibody	Rb pAb	Hu,Rat	WB, ICC/IF
	  GTX130246	iNOS antibody	Rb pAb	Ms,Rat	WB, ICC/IF, IHC-P

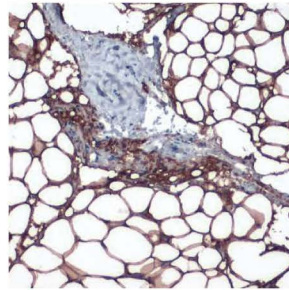
Lipid Biosynthesis



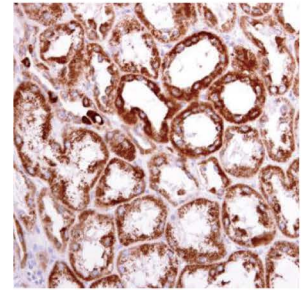
Fatty Acid Synthase antibody ([GTX109833](#))



Apolipoprotein E antibody ([GTX100053](#))



Perilipin 1 antibody ([GTX130139](#))



ACAT1 antibody ([GTX102637](#))



Antibodies for Lipid Biosynthesis

	Cat. No.	Product Name	Clonality	Reactivity	Applications
GPAT	GTX85034	GPAM antibody	Rb pAb	Hu,Ms,Rat	WB, IHC-P, ELISA
	GTX87708	GPAT3 antibody	Rb pAb	Hu,Ms,Rat	WB, ICC/IF, IHC
AGPAT	GTX102081	AGPAT1 antibody [N3C3]	Rb pAb	Hu	WB
	GTX81092	AGPAT3 antibody, Internal	Rb pAb	Hu	WB, IHC-P, FACS
	GTX87835	AGPAT4 antibody	Rb pAb	Hu	WB
	GTX122943	AGPAT5 antibody [N1C2]	Rb pAb	Hu	WB
	GTX106759	LYCAT antibody	Rb pAb	Hu	WB
DGAT	GTX89134	DGAT2 antibody, Internal	Goat pAb	Hu	IHC-P, FACS, ELISA
	GTX02814	DGAT2 antibody	Rb pAb	Rat	WB
MOGAT	GTX45890	MOGAT1 antibody, C-term	Rb pAb	Hu	WB
	GTX117145	MOGAT2 antibody	Rb pAb	Hu	WB
ACAT	GTX102637	ACAT1 antibody [N1N3]	Rb pAb	Hu,Ms	WB, ICC/IF, IHC-P
	GTX84968	ACAT2 antibody [1B7]	Ms mAb	Hu,Rat,Dog,Mk	WB, ICC/IF, IHC-P, FACS
ACC	GTX132081	Acetyl-CoA Carboxylase 1 antibody	Rb pAb	Hu,Ms,Rat	WB, ICC/IF, IHC-P
	GTX33608	Acetyl-CoA Carboxylase 1 antibody [RM232]	Rb mAb	Hu	WB, IHC-P
HMGCS	GTX112346	HMGCS1 antibody	Rb pAb	Hu,Ms	WB, ICC/IF, IHC-P
	GTX128013	HMGCS2 antibody	Rb pAb	Hu	WB, IHC-P
HMGCR	GTX02859	HMGCR antibody [GT1262]	Rb RecAb	Hu,Ms,Rat	WB
	GTX88456	HMGCR antibody, Internal	Goat pAb	Hu,Ms	WB
3-Ketoacyl-ACP synthase	GTX123463	OXSM antibody	Rb pAb	Hu,Ms,Rat	WB, IHC-P
	GTX123464	OXSM antibody	Rb pAb	Hu,Ms	WB, IHC-P
	GTX124011	OXSM antibody	Rb pAb	Hu	WB, IHC-P
Fatty acid synthase	GTX109833	Fatty Acid Synthase antibody [N1], N-term	Rb pAb	Hu,Ms,Rat	WB, ICC/IF, IHC-P, IHC-Fr, IP
	GTX110470	Fatty Acid Synthase antibody [N1N2], N-term	Rb pAb	Hu,Ms	WB, ICC/IF, IHC-P, IP
	GTX629628	Fatty Acid Synthase antibody [GT237]	Ms mAb	Hu,Ms,Rat	WB, IHC-P
	GTX629762	Fatty Acid Synthase antibody [GT556]	Ms mAb	Hu,Ms,Rat	WB, ICC/IF, IHC-P
lipin	GTX107992	Lipin 1 antibody [C3], C-term	Rb pAb	Hu	WB, ICC/IF, IHC-P
	GTX115676	Lipin 1 antibody [N3C2], Internal	Rb pAb	Hu,Ms	WB
	GTX130139	Perilipin 1 antibody	Rb pAb	Ms	WB, IHC-P

Antibodies for Lipid Biosynthesis

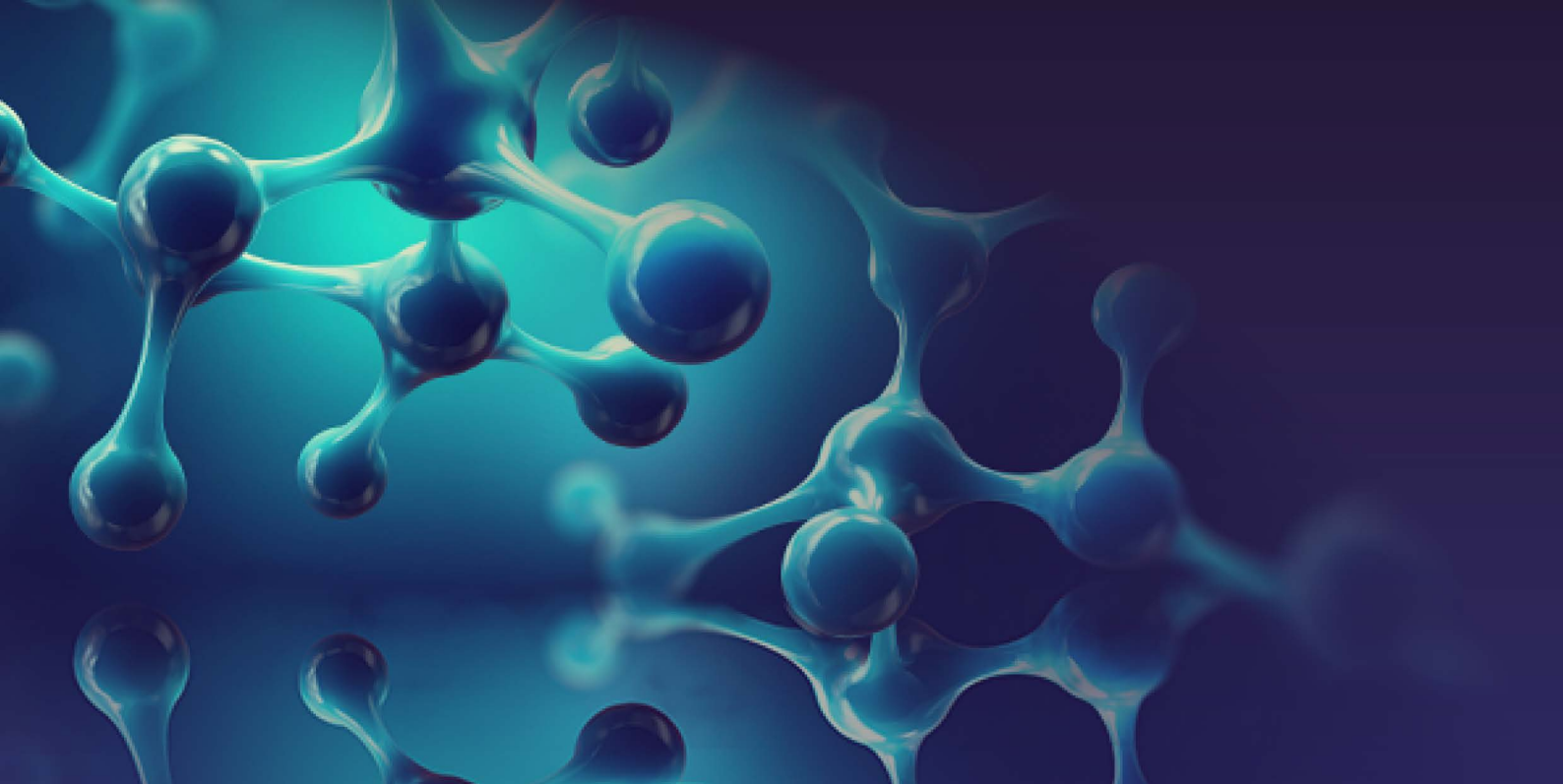
	Cat. No.	Product Name	Clonality	Reactivity	Applications
Apolipoprotein	GTX112692	Apolipoprotein A1 antibody	Rb pAb	Hu,Ms,Rat	WB, ICC/IF, IHC-P
	GTX83043	Apolipoprotein A1 antibody [5F4F5]	Ms mAb	Hu	WB, ELISA
	GTX89166	Apolipoprotein A4 antibody, Internal	Goat pAb	Hu	WB, IHC-P
	GTX83299	Apolipoprotein A5 antibody [1G5G9 (c),2G1H11G9B3]	Ms mAb	Hu	WB, ELISA
	GTX60445	Apolipoprotein B antibody [6G6]	Ms mAb	Hu	WB, ICC/IF, FACS, ELISA
	GTX129994	Apolipoprotein CIII antibody	Rb pAb	Hu	WB, ICC/IF
	GTX101306	Apolipoprotein D antibody	Rb pAb	Hu,Ms,Rat	WB, ICC/IF, IHC-P
	GTX100053	Apolipoprotein E antibody [C2C3], C-term	Rb pAb	Hu	WB, ICC/IF, IHC-P, IP, ELISA, Sandwich ELISA
	GTX101456	Apolipoprotein E antibody	Rb pAb	Hu	WB, ICC/IF, IHC-P
	GTX113627	Apolipoprotein H antibody [N1C2]	Rb pAb	Hu,Ms,Rat	WB, IHC-P

Pentose Phosphate Pathway



Antibodies for Pentose Phosphate Pathway

	Cat. No.	Product Name	Clonality	Reactivity	Applications
TALDO	GTX102076	Transaldolase antibody	Rb pAb	Hu,Ms	WB, IHC-P
	GTX114956	Transaldolase antibody [N2C3]	Rb pAb	Hu	WB, ICC/IF
G6PD	GTX101212	G6PD antibody	Rb pAb	Hu	WB, IHC-P
	GTX101218	G6PD antibody [N3C3]	Rb pAb	Hu,Ms,Rat	WB, IHC-P
	GTX113186	G6PD antibody [N2C1], Internal	Rb pAb	Hu	WB, IHC-P, ELISA, Sandwich ELISA
H6PD	GTX101500	H6PD antibody [N2N3]	Rb pAb	Hu,Ms	WB, IHC-P
	GTX84395	H6PD antibody [2A7]	Ms mAb	Hu,Mk	WB, ICC/IF, IHC-P, FACS
PGLS	GTX120327	PGLS antibody	Rb pAb	Hu,Ms	WB, ICC/IF, IHC-P
6PGD	GTX101703	PGD antibody [N1N3]	Rb pAb	Hu,Ms	WB, ICC/IF, IHC-P
	GTX101704	PGD antibody	Rb pAb	Hu,Ms	WB, ICC/IF, IHC-P
RPI	GTX45278	RPIA antibody, N-term	Rb pAb	Hu	WB



Metabolism is the set of chemical reactions involved in maintaining the living state of cells and the organism. These chemical reactions are organized into metabolic pathways and can be divided into two categories: catabolism, the breakdown of organic molecules such as carbohydrates, lipids and proteins with the release of energy, and anabolism, the synthesis of complex molecules such as proteins and nucleic acids from simpler compounds that generally requires energy. Metabolic pathways are evolutionarily highly conserved between species. Disorders of these processes may result from nutritional deficiencies, disease in metabolic organs such as the liver and pancreas, or genetic mutations. The human and economic impact of conditions such as diabetes mellitus, hyperlipidemia, and osteoporosis is staggering, so additional research is essential for developing preventative approaches in conjunction with therapeutic agents that can minimize the long-term effects of these progressive maladies.



International

Tel 886.3.6208988
Fax 886.3.6208989
Address 6F-2, No. 89, Dongmei Rd., Hsinchu 300, Taiwan (R.O.C.)
E-mail international@genetex.com

USA

Toll-free 1.877.GeneTex(1.877.436.3839)
Fax 1.949.309.2888
Address 2456 Alton Parkway, Irvine, CA 92606 USA
E-mail info@genetex.com

